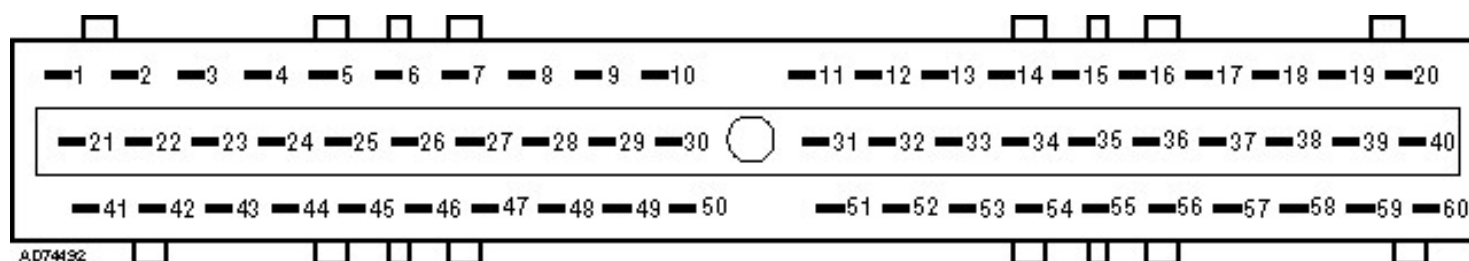
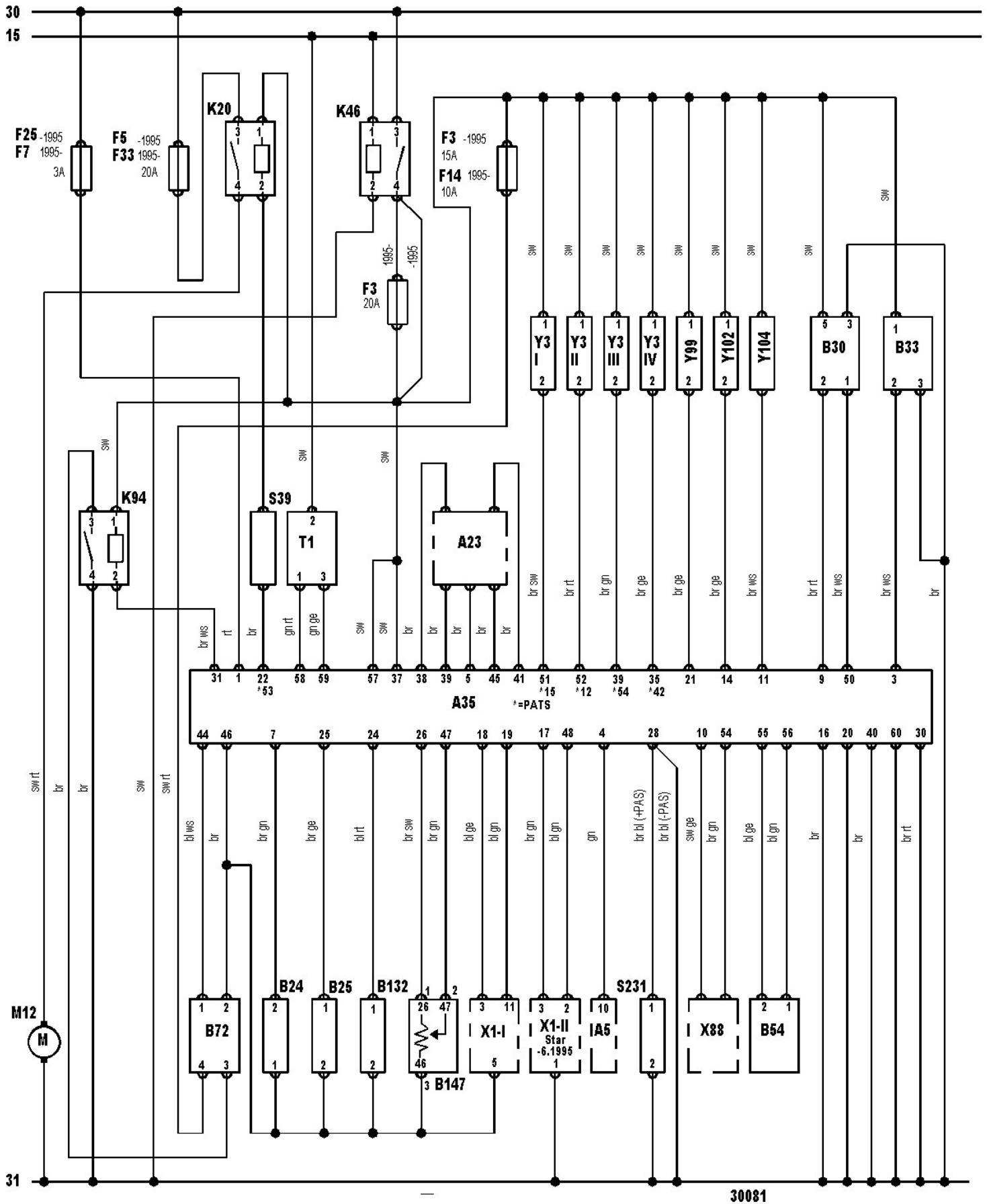


X88	AC connector
A23	Alarm system control module
31	Battery -
30	Battery +
B132	Camshaft position (CMP) sensor
B54	Crankshaft position (CKP) sensor
X1	Data link connector (DLC)
A35	Engine control module (ECM)
K46	Engine control relay
B24	Engine coolant temperature (ECT) sensor
Y104	Evaporative emission (EVAP) canister purge valve
M12	Fuel pump
K20	Fuel pump relay
F	Fuse
B72	Heated oxygen sensor (HO2S)
K94	Heated oxygen sensor (HO2S) relay
Y99	Idle air control (IAC) valve
T1	Ignition coil
15	Ignition switch - ignition ON
S39	Inertia fuel shut-off (IFS) switch
Y3	Injector
A5	Instrument panel
B25	Intake air temperature (IAT) sensor
Y102	Intake manifold air control solenoid
B30	Mass air flow (MAF) sensor
S231	Power steering pressure (PSP) switch
Y111	Secondary air (AIR) solenoid (pulsed)
B147	Throttle position (TP) sensor
B33	Vehicle speed sensor (VSS)



bl = blue	br = brown	el = cream	ge = yellow
gn = green	gr = grey	nf = neutral	og = orange
rs = pink	rt = red	sw = black	vi = violet
ws = white	hbl = light blue	hgn = light green	rbr = maroon
x = braided cable	y = high tension	z = non-cable connection	

NOTE: In certain diagrams (Citroen, Peugeot & Renault), colour codes are replaced by numbers which are used to identify a particular cable and not the colour. In this instance, the cables will be numbered at each end close to the harness connector.



30081