



WIRING DIAGRAMS

3.2 MONDIAL

**3.2 MONDIAL
cabriolet**

This manual is complete and in ENGLISH Only. All other languages have been removed.

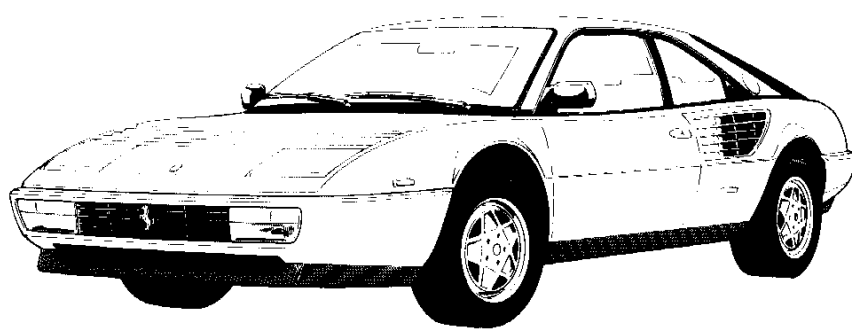
Ferrari MANUAL # 488/87

Ferrari

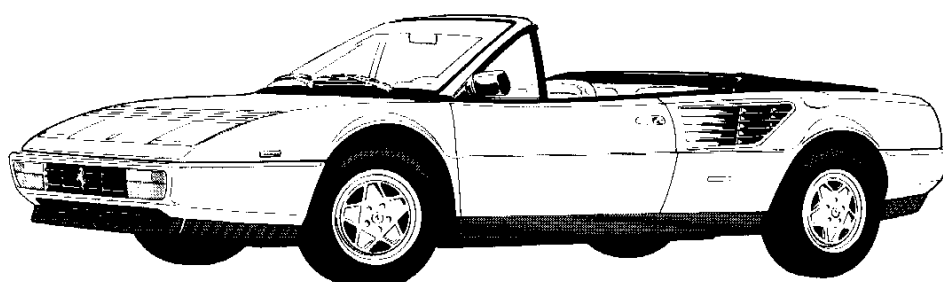
Servizio Assistenza Tecnica



WIRING DIAGRAMS



3.2 MONDIAL



3.2 MONDIAL
cabriolet

Ferrari

Servizio Assistenza Tecnica

<i>INDEX</i>	page
<i>Main box - Fuses and relays</i>	4
<i>Cables color codes</i>	6
<i>Circuit controlled by the ignition key</i>	6
<i>Connectors</i>	7
<i>Fig. 1 - Battery - Alternator and starter</i>	8
<i>Fig. 2 - Fuel injection (CH 88 cars excluded)</i>	10
<i>Fig. 3 - Ignition and socket for diagnosis (CH 88 cars excluded)</i>	12
<i>Fig. 4 - Fuel injection only (for CH 88 cars)</i>	14
<i>Fig. 5 - Ignition and socket for diagnosis (only for CH 88 cars)</i>	16
<i>Fig. 6 - Instrument panel — Controls and display — Hand-brake</i>	18
<i>Fig. 7 - Rear quarter glasses (Cabriolet)</i>	20
<i>Fig. 8 - Rear view mirrors — Windscreen wiper and washer — Horns — Glove box and refuelling lid opening — Current sockets</i>	22
<i>Fig. 9 - Radio — Door locking — Door glass winders — Cigarette lighter — Open door lights — Interior lights — Sun roof</i>	24
<i>Fig. 10 - External lights (G.B. cars excluded)</i>	26
<i>Fig. 11 - External lights (only for G.B. cars)</i>	28
<i>Fig. 12 - ABS system</i>	30
<i>Fig. 13 - Internal temperature and water blowers ...</i>	32

COLOURS OF CABLE

A	- Light blue
B	- Withe
C	- Orange
G	- Yellow
H	- Grey
L	- Blue
M	- Brown
N	- Black
P	- Beige
R	- Red
S	- Pink
V	- Green
Z	- Violet

Note: The not indicated section of the wires is 0,8 mm²

ELECTRICAL CIRCUITS CONTROLLED BY THE IGNITION SWITCH

- Starter
- Charging circuit
- Windscreen wiper and washer
- Stop lights
- Direction indicator lights
- Ignition
- Reverse lights
- Electric fuel pump
- Window winders
- Air conditioning system
- Instruments (clock excluded)
- Glove box opening and bonnet

- Heated rear window
- Blowers for water radiator

- Start electro-valve
- ABS system

CONNECTORS

- C 1** - Connector for instrument panel (on L.H. side of instrument panel).
- C 2** - Connector for engine sensor.
- C 3** - Connector for engine wiring (on L.H. side of engine compartment).
- C 4** - Connector for engine wiring (on L.H. side of engine compartment).
- C 5** - Connector for instrument panel (on L.H. side of instrument panel).
- C 6** - Connector for central tunnel wiring (behind passenger's footrest).
- C 7** - Connectors for central tunnel wiring (behind passenger's footrest).
- C 8** - Connectors for L.H. door wiring (on L.H. side of instrument panel).
- C 9** - Connectors for R.H. door (on R.H. side of instrument panel).
- C 10** -Connector for ABS system.
- C 11** -Connector for central tunnel wiring (behind passenger's footrest).
- C 12** -Connector for Air Conditioning evaporator.
- C 13** -Connector for sun roof motor.
- C 14** -Connector for internal temperature control unit.
- C 15** -Connector for internal temperature control unit.
- C 16** -Connector for instrument panel (on L.H. side of instrument panel)
- X-Y** - Horizontal connectors on R.H. side of main box.
- W** - Vertical connectors on R.H. side of main box.
- K-J** - Horizontal connectors on L.H. side of main box.
- U-V-Z** - Vertical connectors on L.H. side of main box.

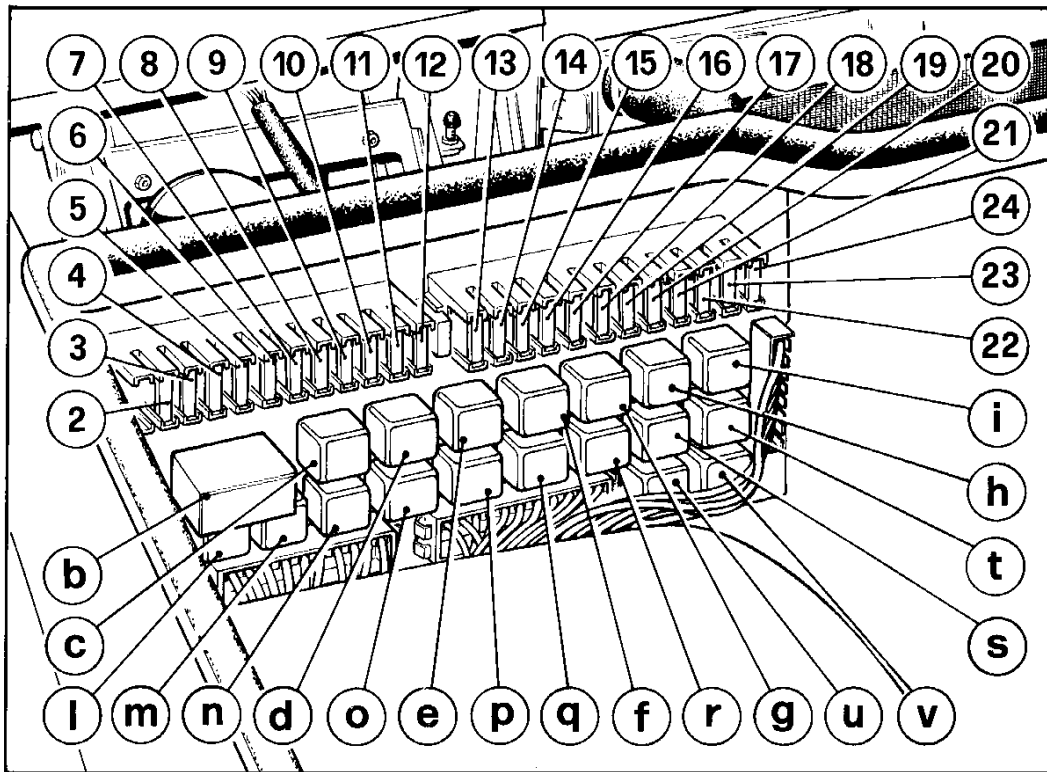
FIG. 1 — BATTERY — ALTERNATOR AND STARTER

- 12** — Battery
- 13** — Battery switch
- 16** — Cable for starter
- 17** — Electric board
- 47** — Alternator warning light (12V - 2W)

- 83** — Key operated antitheft and ignition switch

- 132** — Starter motor
- 133** — Alternator with voltage regulator
- 169** — Connector for cable of starter
- 198** — Control relay for indicator 46

MAIN BOX



FUSES

Left box

- 2 - 25 A: Electric motor for hlg/low beams - Engine bonnet opening - Refuelling lid opening.
- 3 - 25 A: Front bonnet opening - Rear bonnet opening - Door locking.
- 4 - 15 A: Rear heated window.
- 5 - 15 A: Hazard - Courtesy lights - Current socket - Clock - Daylight flashing.
- 6 - 20 A: Electro-fan for A.C. condenser.
- 7 - 20 A: Left electro-fan for water radiator.
- 8 - 20 A: Right electro-fan for water radiator.
- 9 - 20 A: Horns - Cigar lighter - Radio - Rear view mirror - Parking lights.
- 10 - 7,5 A: Cold start electro-valve.
- 11 - 15 A: L.H. main beam and relevant warning light.
- 12 - 15 A: R.H. main beam.

Right box

- 13 - 10 A: L.H. dipped beam.
- 14 - 10 A: R.H. dipped beam.
- 15 - 7,5 A: Front light - Rear light.
- 16 - 7,5 A: Front light - Rear light.
- 17 - 15 A: Rear lights - Licence plate light - Instruments panel light - Front fog lights.
- 18 - 20 A: Air conditioning system.
- 19 - 20 A: L.H. window motor.
- 20 - 20 A: R.H. window motor.
- 21 - 15 A: Electric fuel pump.
- 22 - 7,5 A: Instruments and glove box compartement.
- 23 - 15 A: Windscreen wiper - Windscreen washer - Reverse lights.
- 24 - 20 A: Direction indicator lights - Stop rear lights - Sun roof.

RELAYS

- b - Relay for windshield wiper (SIPEA 6.0633.00.0)
- c - Relay for R.H. head-lamps lifting motor (BOSCH 0332204101).
- d - Relay for electron-fan of A.C. condenser (BOSCH 0332014113).
- e - Relay for horn compressor (BOSCH 0332014113).
- f - Relay for hights beam headlamps (BOSCH 0332014113).
- g - Relay for lights and fog lights (BOSCH 0332015006).
- h - Relay for windows motors (BOSCH 0332014113).
- i - Fuel injection delivery pump starting relay (BOSCH 0332204101). (Not for CH 88 cars)
- l - Relay for high/low wiper speed (BOSCH 0332204101).
- m - Relay for head-lamps lifting motor (BOSCH 0332204101).
- n - Relay for L.H. head-lamps lifting motor (BOSCH 0332204101).
- o - Relay for left electro-fan of water radiator (BOSCH 0332014113).
- p - Relay for right electro-fan of water radiator (BOSCH 0332014113).
- q - Relay for low beams (BOSCH 0332014113).
- r - Relay for flashing (BOSCH 0332104101).
- s - Relay for Air Conditioning operation (BOSCH 0332014113).
- t - Relay for fuel pump (BOSCH 0332014113).
- t - Bridge for fuel pump (Only for CH 88 cars).
- u - Relay for light lifting motors (with low beams on) (BOSCH 0332204101).
- u - Bridge for head lamp lifting motor with position lights (For G.B. cars).
- v - Relay for key controlled services (BOSCH 0332014113).

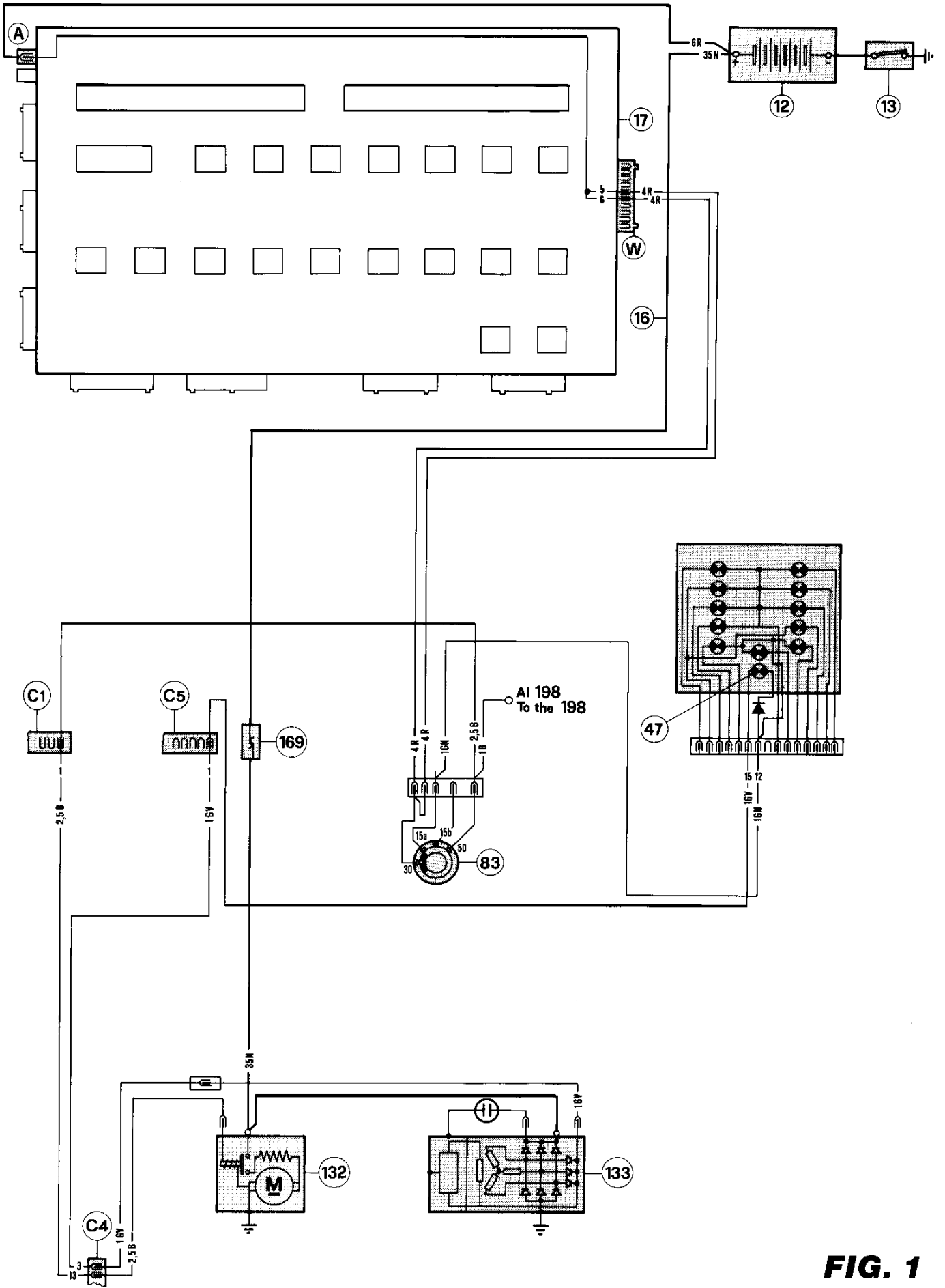


FIG. 1

FIG. 3 — IGNITION AND SOCKET FOR DIAGNOSIS (CH 88 CARS EXCLUDED)

- 12** — Battery
- 53** — Electronic engine speed indicator
- 83** — Key operated antitheft and ignition switch

- 111** — *Connector (25 way) for ignition module 130*
- 130** — Electronic ignition module
- 147** — Ignition coil with power module
- 148** — Socket for connection of diagnosis unit
- 152** — Ignition distributor
- 153** — Engine speed sensor
- 154** — T.D.C. pick-up (cylinders)
- 155** — Two ways connector
- 156** — Spark plugs
- 168** — Single shielded cable
- 171** — Throttle microswitch
- 173** — *Relay for electro-fan of oil radiator*

COLOURS OF CABLE

- A** - Light blue
- B** - White
- C** - Orange
- G** - Yellow
- H** - Grey
- L** - Blue
- M** - Brown
- N** - Black
- P** - Beige
- R** - Red
- S** - Pink
- V** - Green
- Z** - Violet

Note: The not indicated section of the wires is 0,8 mm²

FIG. 4 — FUEL INJECTION (FOR CH 88 CARS)

- 12 — Battery
- 13 — Battery switch
- 17 — Electric board
- 53 — Electronic engine speed indicator
- 58 — Odometer - clock - panel illumination rheostat

- 83 — Key operated antitheft and ignition switch

- 129 — Electric fuel pump
- 130 — Electronic ignition module
- 132 — Starter motor
- 142 — Additional air start valve
- 143 — Auxiliary starting assembly
- 146 — Impulse generator for electronic speedometer
- 164 — Oxigen sensor
- 169 — Connector for cable of starter
- 171 — Throttle microswitch
- 173 — Relay for electro-fan of oil radiator
- 175 — Thermo-couple for exhaust system temperature survey
- 176 — Hight temperature exhaust system warning light (slow-down)
- 177 — Water temeperature sensor (NTC)
- 179 — Two ways connector
- 180 — Ground for power devices
- 181 — Ground for electronic devices
- 182 — Electromagnetic pressure actuator
- 183 — Potentiometer on air-flow sensor
- 184 — Electrovalve for cut-off valve
- 185 — Control valve for evaporation
- 186 — Socket for injection diagnosis
- 187 — Connector for injection electronic control unit
- 188 — Barometric capsule
- 189 — Tachometric relay
- 202 — Plate for Lambda sonde devices
- 203 — Connector for Lambda sonde exclusion
- 204 — Relay for electrovalve 184
- 205 — Control unit for thermo-couple 175
- 206 — Electronic relay for injection system protection

COLOURS OF CABLE

- A** - Light blue
- B** - Withe
- C** - Orange
- G** - Yellow
- H** - Grey
- L** - Blue
- M** - Brown
- N** - Black
- P** - Beige
- R** - Red
- S** - Pink
- V** - Green
- Z** - Violet

Note: The not indicated section of the wires is 0,8 mm²

FIG. 4

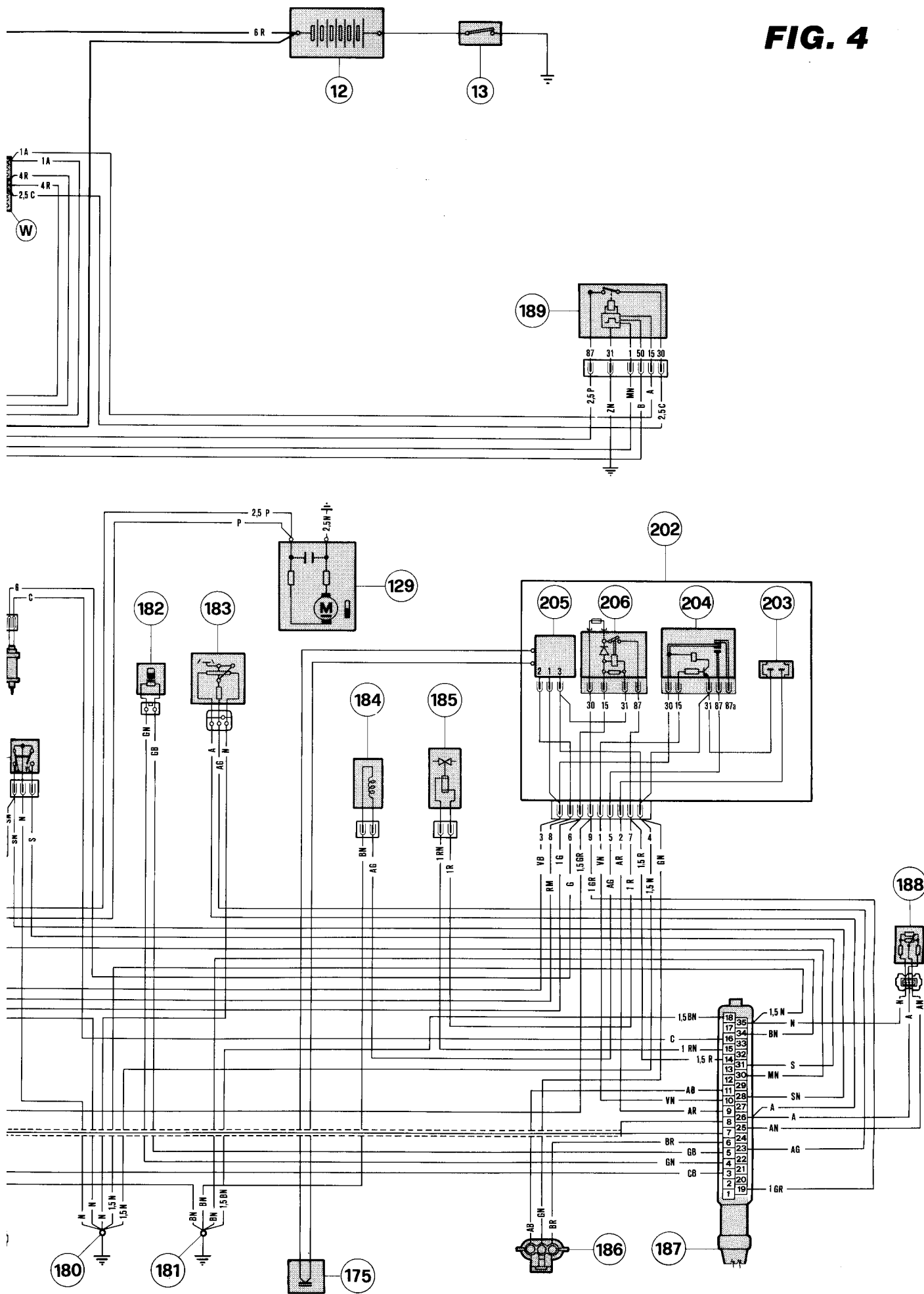


FIG. 5 — IGNITION AND SOCKET FOR DIAGNOSIS (FOR CH 88 CARS ONLY)

- 12** — Battery
- 53** — Electronic engine speed indicator
- 83** — Key operated antitheft and ignition switch

- 111** — Connector (25 way) for ignition module
- 130** — Electronic ignition module
- 147** — Ignition coil with power module
- 148** — Socket for connection of diagnosis unit
- 152** — Ignition distributor
- 153** — Engine speed sensor
- 154** — T.D.C. pick-up (cylinders)
- 155** — Two ways connector
- 156** — Spark plugs
- 168** — Single shielded cable
- 171** — Throttle microswitch
- 173** — Relay for electro-fan of oil radiator

COLOURS OF CABLE

- A** - Light blue
- B** - White
- C** - Orange
- G** - Yellow
- H** - Grey
- L** - Blue
- M** - Brown
- N** - Black
- P** - Beige
- R** - Red
- S** - Pink
- V** - Green
- Z** - Violet

Note: The not indicated section of the wires is 0,8 mm²

FIG. 6 — INSTRUMENT PANEL — CONTROLS AND DISPLAYS — HAND-BRAKE

- 12 — Battery
- 13 — Battery switch
- 17 — Electric board
- 21 — Feed supply for front fog lights

- 25 — Front pads wear contacts for indicator 52
- 27 — Solenoid for front bonnet opening
- 31 — Protection fuse for relay 158 (3A)
- 35 — Rear heated window switch
- 36 — Switch for front bonnet opening
- 37 — Front fog lights switch
- 38 — Switch for engine bonnet opening
- 39 — Rear fog lights switch
- 40 — Switch for rear bonnet opening

- 41 — Electronic speedometer (12V - 2W)
- 42 — L.H. direction indicator light (12V - 2W)

- 43 — Parking lights indicator (12V - 2W)

- 44 — Front fog lights indicator (12V - 2W)

- 45 — Rear heated window warning light (12V - 2W)

- 46 — Brake system failure warning light (12V - 2W)

- 47 — Alternator warning light (12V - 2W)

- 48 — R.H. direction indicator light (12V - 2W)

- 49 — Headlamp main beam warning light (12V - 2W)

- 50 — Indicator for rear fog lights (12V - 2W)

- 51 — Indicator for parking lights (12V - 2W)
- 52 — Parking brake and front pads wear warning light

- 53 — Electronic engine speed indicator
- 54 — Fuel reserve warning light (12V - 2W)

- 55 — Water temperature gauge (12V - 2W)
- 56 — Oil pressure gauge with low pressure warning light (12V - 2W)
- 57 — Oil temperature gauge (12V - 2W)
- 58 — Odometer - clock - panel illumination rheostat

- 67 — Switch for map light 66
- 78 — Direction indicator switch
- 83 — Key operated antitheft and ignition switch

- 86 — Lower open door marker light (12V - 3W)
- 87 — Cigarette lighter with illumination (12V - 1,2W)
- 89 — Parking lights switch
- 90 — External rear view mirrors adjusting switch

- 98 — Heated rear window
- 105 — Cable for connection to switch 39 (car equipped with front fog lights).
- 107 — Ash tray illumination lamp (12V - 1,2W)
- 126 — Parking brake switch

- 128 — Fuel level sending unit
- 130 — Electronic ignition module
- 133 — Alternator with voltage regulator
- 134 — Sending unit for oil temperature gauge
- 137 — Sending unit for oil pressure gauge
- 138 — Low pressure switch for oil pressure warning light.

- 139 — Sending unit for water temperature gauge
- 146 — Impulse generator for electronic speedometer
- 157 — Solenoid for engine bonnet opening
- 159 — Diode box
- 161 — Solenoid for rear bonnet opening
- 164 — Rear fog light (12V - 21W)
- 176 — High temperature exhaust system light (slow down) 12V - 2W (only for CH 88 cars)
- 198 — Control relay for indicator 46
- 201 — ABS warning light (12V - 2W)
- 205 — Control unit for thermo-couple 175

COLOURS OF CABLE

- A - Light blue
- B - White
- C - Orange
- G - Yellow
- H - Grey
- L - Blue
- M - Brown
- N - Black
- P - Beige
- R - Red
- S - Pink
- V - Green
- Z - Violet

Note: The not indicated section of the wires is 0,8 mm²

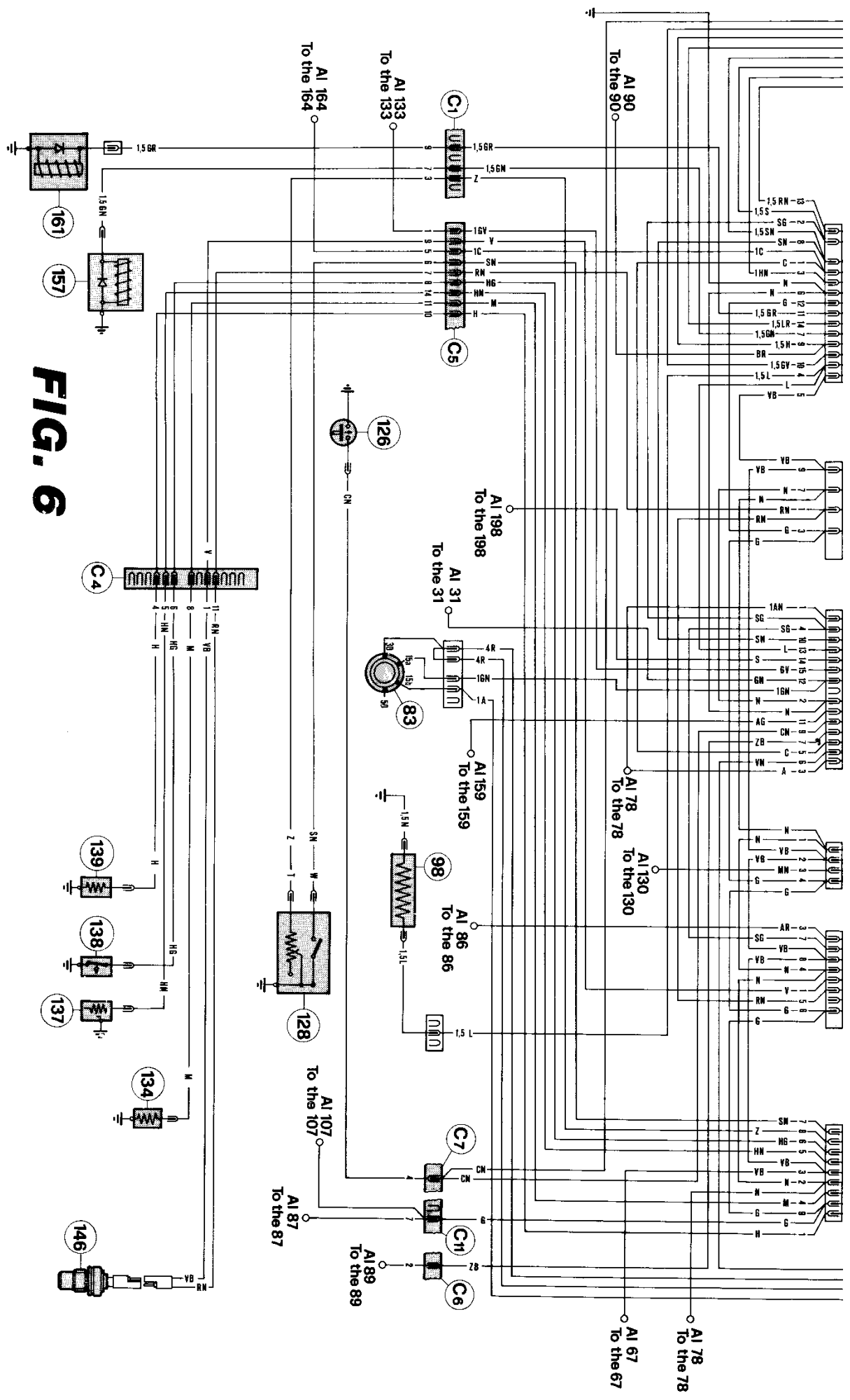


FIG. 6

FIG. 7 — REAR QUARTER GLASSES (CABRIOLET)

- 17 — Electric board
- 19 — Switch for rear quarter glasses locking device

- 20 — Warning light for locking device of rear quarter glasses (12V - 2W)
- 58 — Odometer - clock - panel illumination rheostat

- 94 — R.H. window control switch
- 104 — Switch for L.H. side rear quarter glass

- 112 — Switch for R.H. side rear quarter glass

- 113 — Motor for rear L.H. side glass
- 114 — Motor for rear R.H. side glass

COLOURS OF CABLE

- A - Light blue
- B - White
- C - Orange
- G - Yellow
- H - Grey
- L - Blue
- M - Brown
- N - Black
- P - Beige
- R - Red
- S - Pink
- V - Green
- Z - Violet

Note: The not indicated section of the wires is 0,8 mm²

FIG. 7

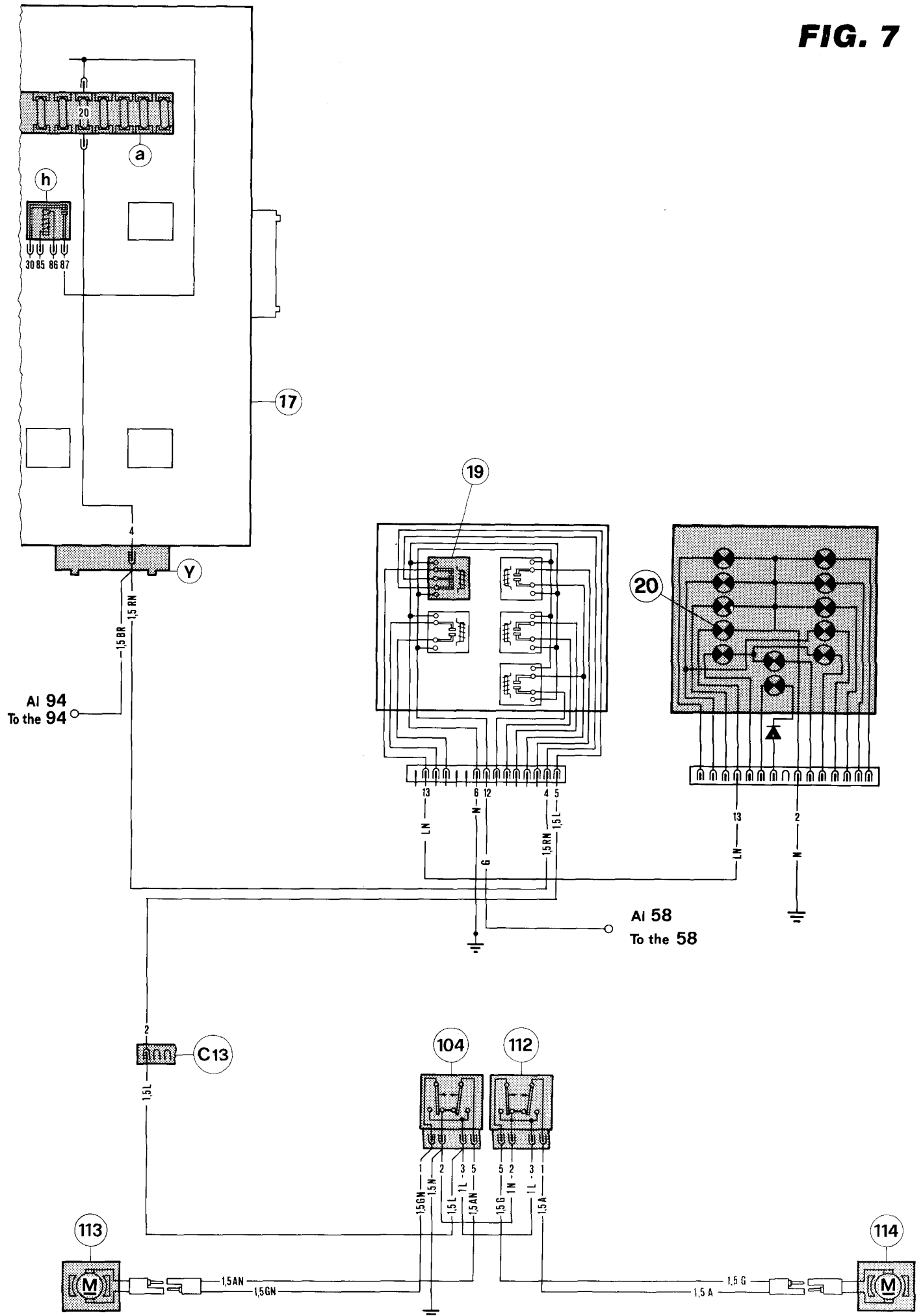


FIG. 8 — REAR VIEW MIRRORS — WIND-SCREEN WIPER AND WASHER — HORNS — GLOVE BOX AND REFUELLING LID OPENING — CURRENT SOCKETS

- 11 — Horn compressor motor
- 12 — Battery
- 13 — Battery switch
- 15 — Screen - washer pump
- 17 — Electric board
- 29 — Windscreen wiper motor
- 30 — R.H. electric external rear view mirror
- 40 — Switch for rear bonnet opening
- 57 — Oil temperature gauge (12V - 2W)
- 59 — Hazard lights switch
- 65 — Horn switch
- 66 — Adjustable map light inside glove box compartment
- 67 — Switch for map light 66
- 68 — Solenoid for glove box opening
- 69 — Switch for glove box opening
- 70 — Current socket
- 71 — L.H. electric external rear view mirror
- 79 — Lights switch
- 80 — Switch for high/low beam and daylight flashing
- 81 — Triple switch for windscreen wiper/washer

- 82 — Switch for high/low wiping speed
- 83 — Key operated antitheft and ignition switch

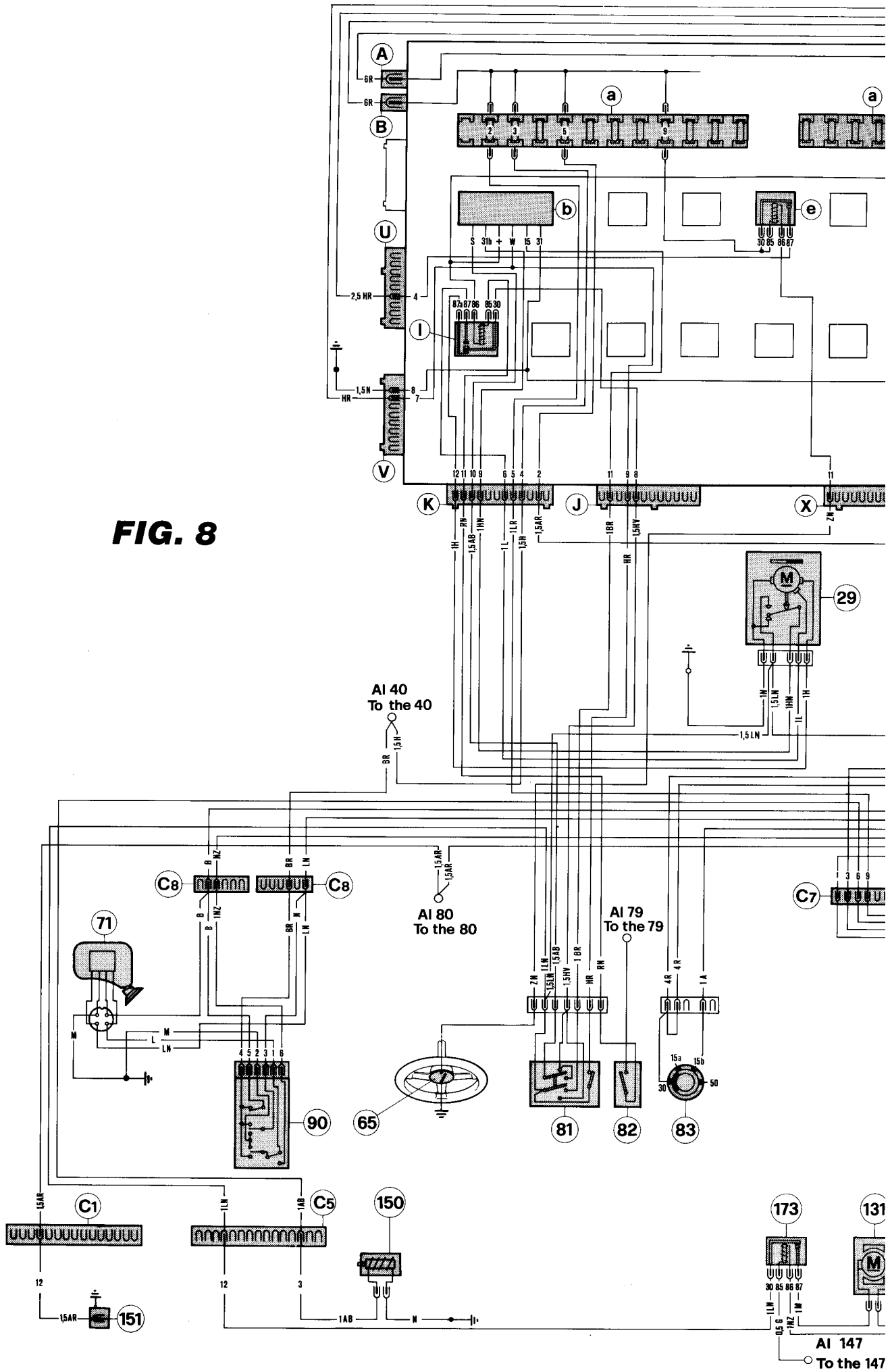
- 90 — External rear view mirrors adjusting switch
- 92 — Switch for refuelling lid opening
- 131 — Motor of oil radiator-fan
- 147 — Ignition coil with power module
- 150 — Solenoid for refuelling lid opening
- 151 — Current socket in engine compartment
- 172 — Thermoswitch for oil radiator - fan motor
- 173 — Relay for electro-fan of oil radiator
- 183 — Potentiometer on air flow sensor

COLOURS OF CABLE

A	- Light blue
B	- White
C	- Orange
G	- Yellow
H	- Grey
L	- Blue
M	- Brown
N	- Black
P	- Beige
R	- Red
S	- Pink
V	- Green
Z	- Violet

Note: The not indicated section of the wires is 0,8 mm²

FIG. 8



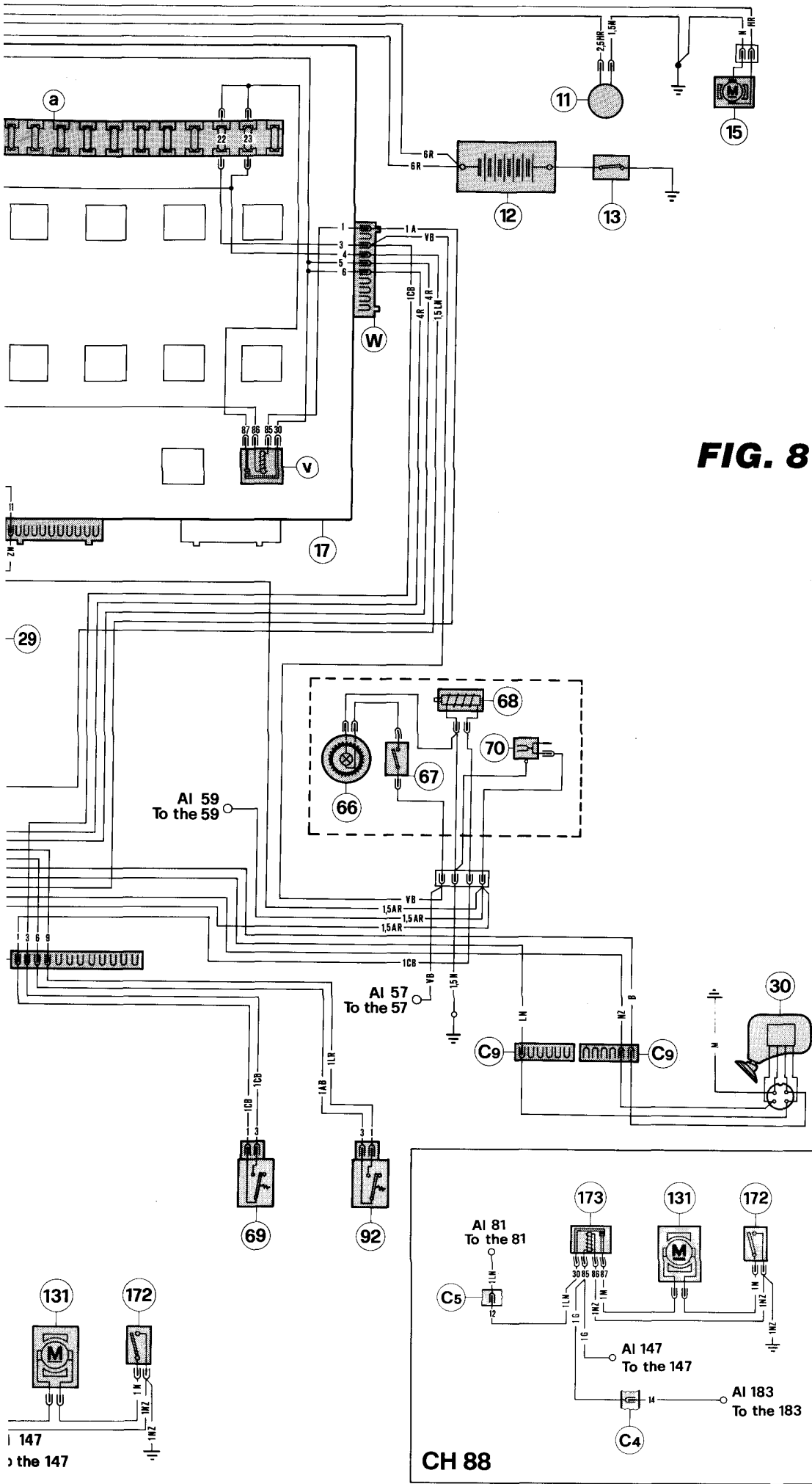


FIG. 8

CH 88

FIG. 9 — RADIO — DOOR LOCKING — DOOR GLASS WINDERS — CIGARETTE LIGHTER — OPEN DOOR LIGHTS — INTERIOR LIGHTS — SUN ROOF

COLOURS OF CABLE

A	- Light blue
B	- Withe
C	- Orange
G	- Yellow
H	- Grey
L	- Blue
M	- Brown
N	- Black
P	- Beige
R	- Red
S	- Pink
V	- Green
Z	- Violet

Note: The not indicated section of the wires is 0,8 mm²

- 12 — Battery
- 13 — Battery switch
- 17 — Electric board
- 28 — Stop lights switch
- 40 — Switch for rear bonnet opening

- 55 — Water temperature gauge (12V - 2W)
- 58 — Odometer - clock - panel illumination rheostat

- 59 — Hazard lights switch
- 60 — Push button unit for A.C. system (12V - 1,2W)

- 72 — Pillar switch for open door lights

- 73 — Woofer speaker on the door
- 74 — L.H. window operating motor
- 75 — Door locking actuator
- 76 — Open door marker light (12V - 4W)
- 83 — Key operated antitheft and ignition switch

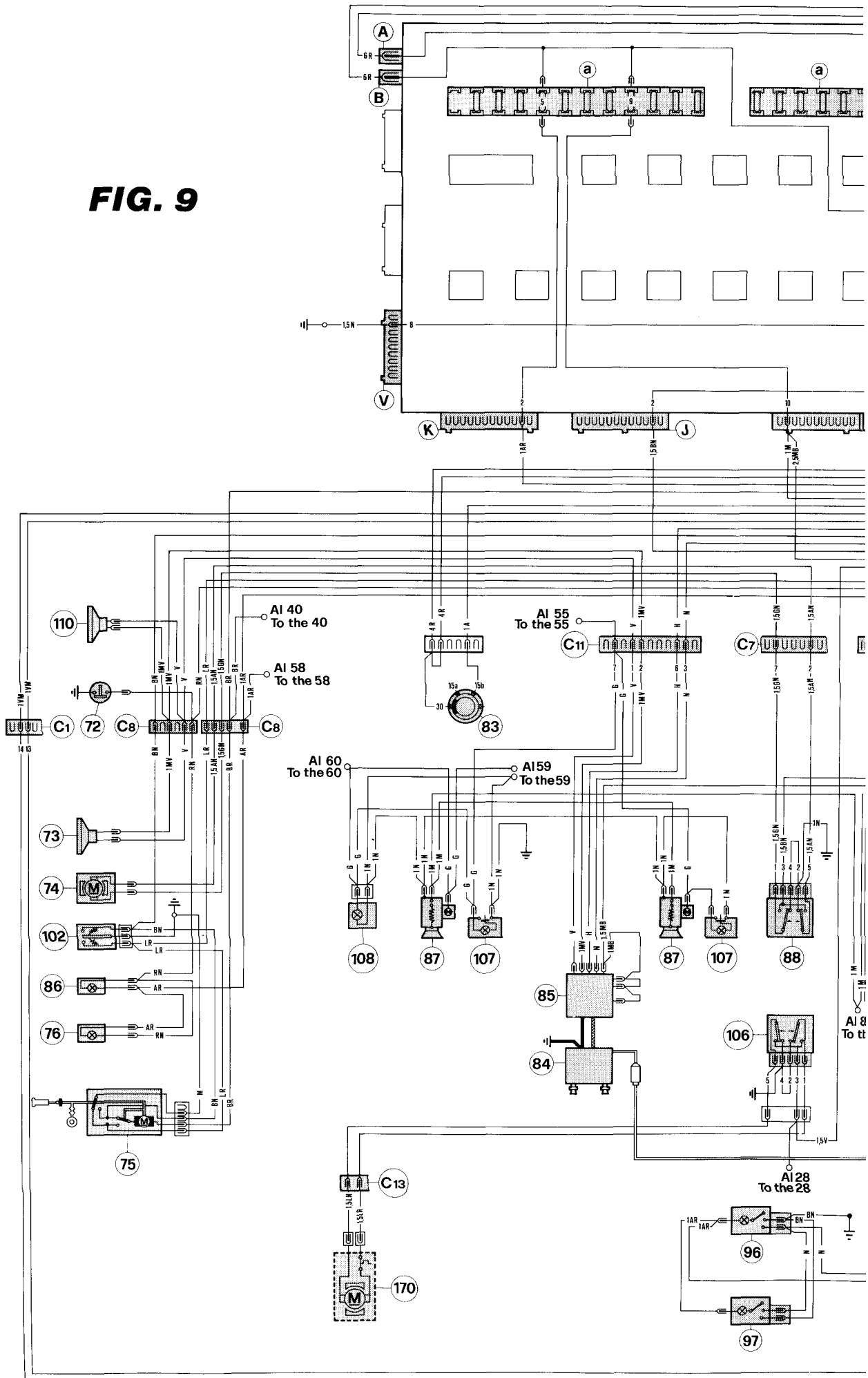
- 84 — Preamplified radio with tape recorder
- 85 — Radio amplifier 2 x 20W
- 86 — Lower open door marker light (12V - 3W)
- 87 — Cigarette lighter with illumination (12V - 1,2W)
- 88 — L.H. window control switch
- 89 — Parking lights switch
- 93 — Radio aerial switch
- 94 — R.H. window control switch
- 96 — Front interior light with switch (12V - 10W)

- 97 — Rear interior light with switch (12V - 10W)

- 101 — R.H. window operating motor
- 102 — Switch for internal locking door

- 106 — Switch for sun roof (optional)
- 107 — Ash tray illumination lamp (12V - 1,2W)
- 108 — Lamp for illumination of controls on central consolle (12V - 5W)
- 109 — g - Timer for interior lights (underneath passenger's foot rest)
- 110 — Tweeter speaker on the dashboard
- 160 — Electric aerial motor
- 170 — Motor for electric sun roof
- 198 — Control relay for indicator 46

FIG. 9



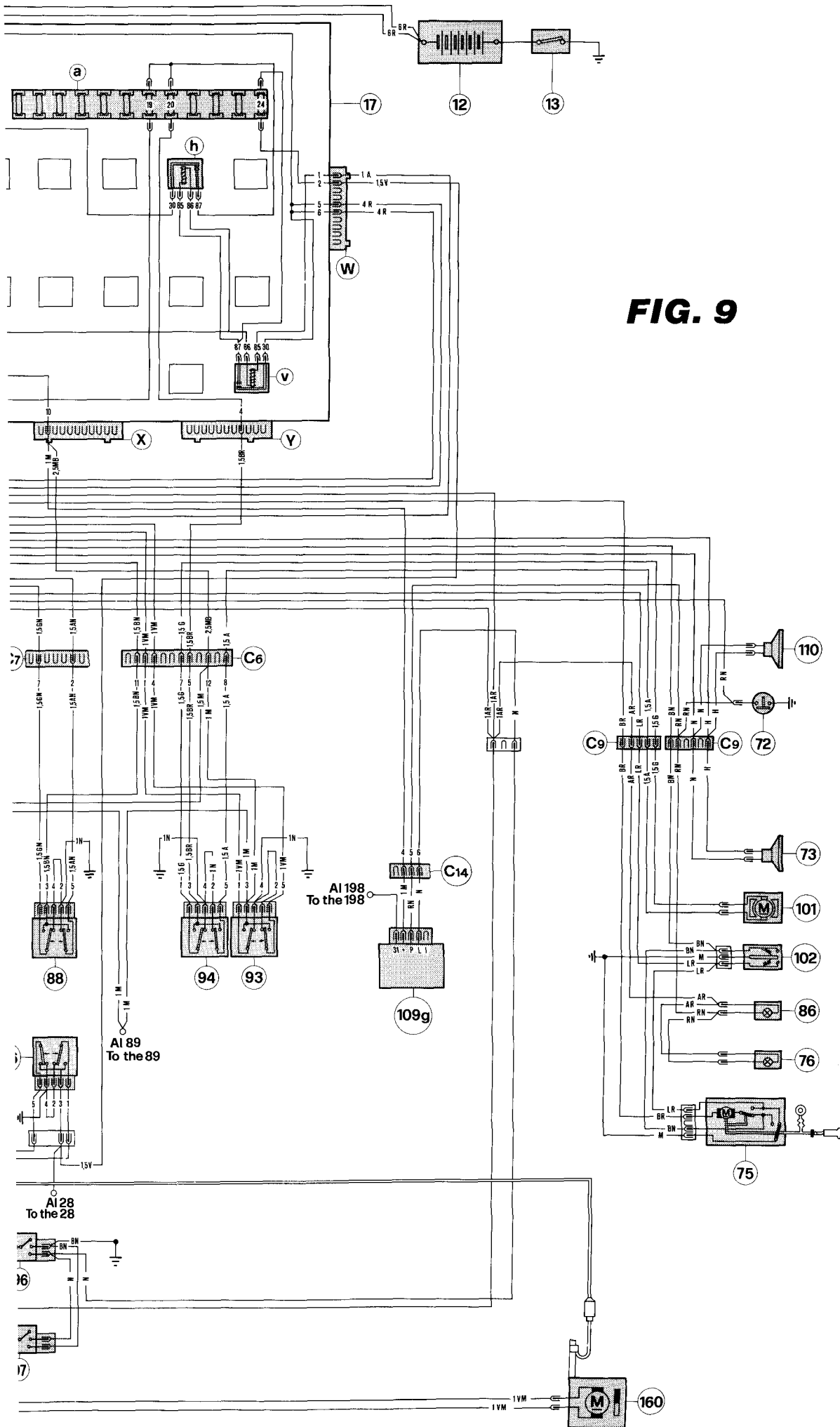


FIG. 9

FIG. 10 — EXTERNAL LIGHTS (EXCLUDED G.B. CARS)

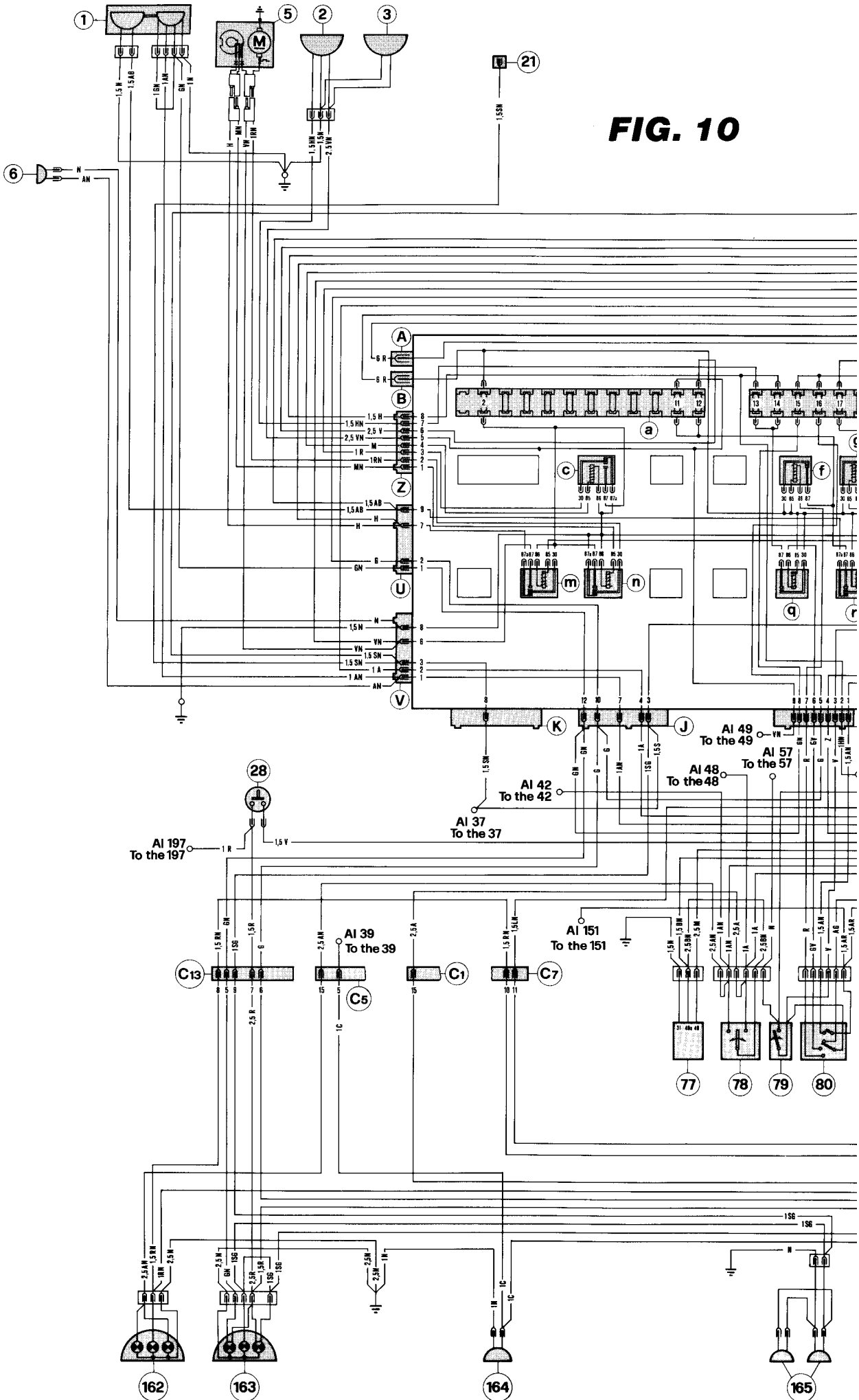
- 1 — Parking and direction indicator lights (12V - 5W) with flashing light (12V - 55W)
- 2 — Headlamp main beam/dipped beam (H4 - 12V - 55/60W)
- 3 — Headlamp main beam (12V - 55W)
- 5 — Headlamp lifting motor
- 6 — Side turn indicator (12V - 4W)
- 12 — Battery
- 13 — Battery switch
- 17 — Electric board
- 21 — Feed supply for front fog lights
- 28 — Stop lights switch
- 37 — Front fog lights switch
- 39 — Rear fog lights switch
- 42 — L.H. direction indicator light (12V - 2W)
- 48 — R.H. direction indicator light (12V - 2W)
- 49 — Headlamp main beam warning light (12V - 2W)
- 57 — Oil temperature gauge (12V - 2W)
- 59 — Hazard lights switch
- 70 — Current socket
- 77 — Flasher for direction indicators and hazard lights
- 78 — Direction indicator switch
- 79 — Lights switch
- 80 — Switch for high/low beam and daylight flashing
- 82 — Switch for high low/wiping speed
- 83 — Key operated antitheft and ignition switch
- 87 — Cigarette lighter with illumination (12V - 1,2W)
- 89 — Parking lights switch
- 93 — Radio aerial switch
- 106 — Switch for sun roof (optional)
- 127 — Reverse light switch
- 151 — Current socket in engine compartment
- 162 — Rear direction indicator and reverse light (12V - 21W)
- 163 — Stop, rear parking lights (12V - 5/2W) and luggage compartment illumination (12V - 5W)
- 164 — Rear fog light (12V - 21W)
- 165 — Number plate lamps (12V - 5W)
- 197 — Connector for ABS electronic control unit

COLOURS OF CABLE

A	- Light blue
B	- White
C	- Orange
G	- Yellow
H	- Grey
L	- Blue
M	- Brown
N	- Black
P	- Beige
R	- Red
S	- Pink
V	- Green
Z	- Violet

Note: The not indicated section of the wires is 0,8 mm²

FIG. 10



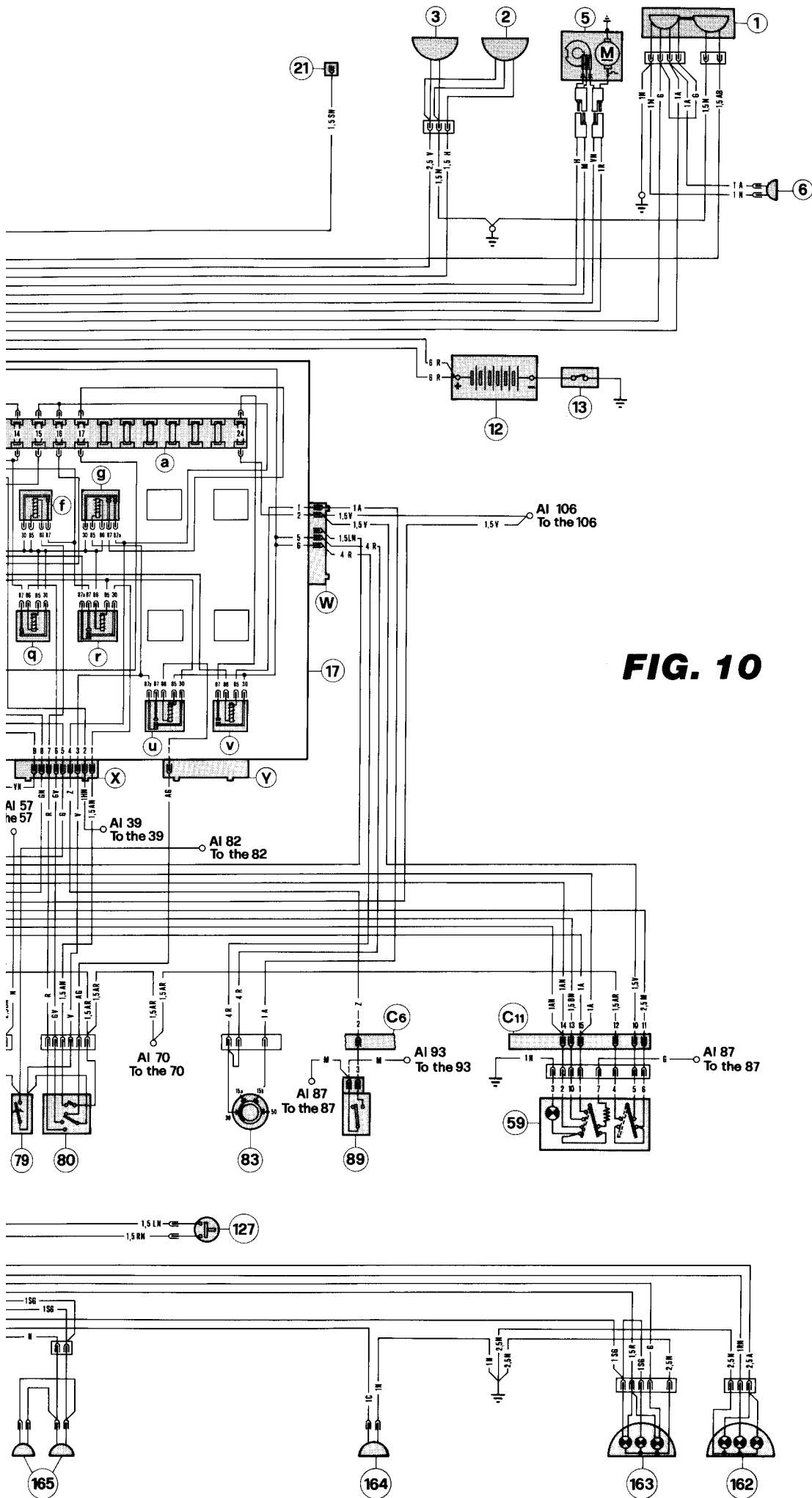


FIG. 10

FIG. 11 — EXTERNAL LIGHTS (FOR G.B. CARS)

- 1 — Parking and direction indicator lights (12V - 5W) with anti-fog lights (12V - 55W)
- 2 — Headlamp main beam/dipped beam (H4 - 12V - 55/60W)
- 3 — Headlamp main beam (12V - 55W)
- 5 — Headlamp lifting motor
- 6 — Side turn indicator (12V - 4W)
- 12 — Battery
- 13 — Battery switch
- 17 — Electric board
- 28 — Stop lights switch
- 37 — Front fog lights switch
- 39 — Rear fog lights switch
- 42 — L.H. direction indicator light (12V - 2W)
- 48 — R.H. direction indicator light (12V - 2W)
- 49 — Headlamp main beam warning light (12V - 2W)
- 57 — Oil temperature gauge (12V - 2W)
- 59 — Hazard lights switch
- 70 — Current socket
- 77 — Flasher for direction indicators and hazard lights
- 78 — Direction indicator switch
- 79 — Lights switch
- 80 — Switch for high/low beam and daylight flashing
- 82 — Switch for high low/wiping speed
- 83 — Key operated antitheft and ignition switch
- 87 — Cigarette lighter with illumination (12V - 1,2W)
- 89 — Parking lights switch
- 93 — Radio aerial switch
- 106 — Switch for sun roof (optional)
- 127 — Reverse light switch
- 151 — Current socket in engine compartment
- 162 — Rear direction indicator and reverse light (12V - 21W)
- 163 — Stop, rear parking lights (12V - 5/2W) and luggage compartment illumination (12V - 5W)
- 164 — Rear fog light (12V - 21W)
- 165 — Number plate light (12V - 5W)
- 174 — Device for DIM-DIP lights
- 175 — Relay for DIM-DIP device
- 197 — Connector for ABS electronic control unit

COLOURS OF CABLE

A	- Light blue
B	- Withe
C	- Orange
G	- Yellow
H	- Grey
L	- Blue
M	- Brown
N	- Black
P	- Beige
R	- Red
S	- Pink
V	- Green
Z	- Violet

Note: The not indicated section of the wires is 0,8 mm²

FIG. 11

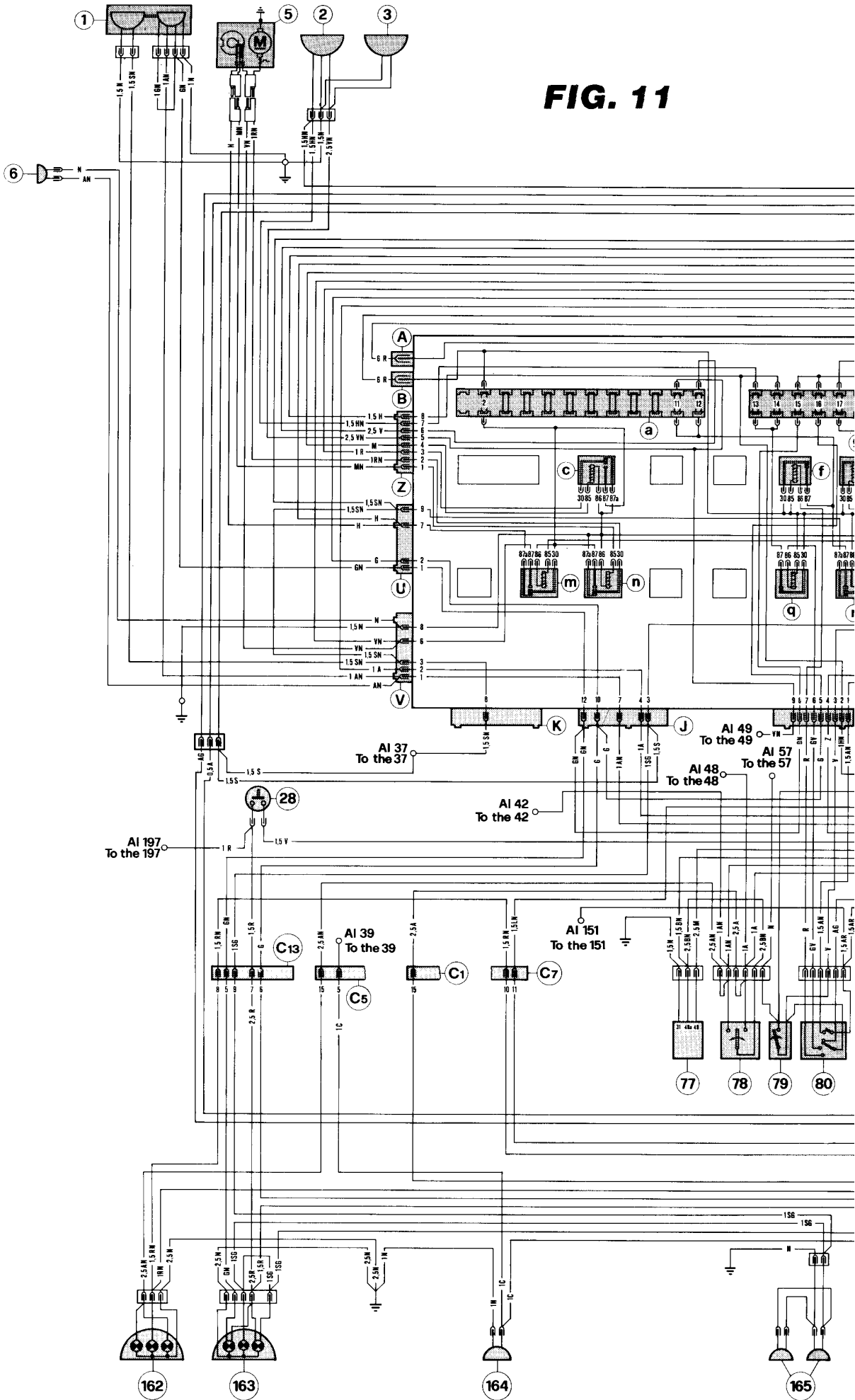


FIG. 12 — ABS SYSTEM

- 12** — Battery
- 13** — Battery switch
- 14** — Protection fuse for relay 149 (30A)
- 17** — Electric board
- 28** — Stop lights switch
- 31** — Protection fuse for relay 158 (3A)
- 32** — Protection fuse for relay 140 (30A)
- 46** — Brake system failure warning light (12V - 2W)

- 52** — Parking brake and front pads wear warning light (12V - 2W)
- 83** — Key operated antitheft and ignition switch

- 95** — R.H. front sensor for ABS system
- 109** — **g** - Timer for interior lights (underneath passenger's foot rest)
- 135** — L.H. front sensor for ABS system
- 140** — Relay for electronic unit
- 149** — Control relay for brake fluid pump

- 158** — Control relay for ABS system
- 159** — Diodes box
- 166** — Socket for diagnosis
- 190** — Switches for brake fluid level control
- 191** — Two ways connector
- 192** — Switches for brake fluid pressure control
- 193** — Motor for brake fluid pump
- 194** — Electromagnetic valves for ABS regulation
- 195** — Main electromagnetic valve
- 196** — ABS idraulic box
- 197** — Connector for ABS electronic unit
- 198** — Control relay for indicator 46
- 199** — L.H. rear sensor for ABS system
- 200** — R.H. rear sensor for ABS system
- 201** — ABS warning light (12V - 2W)

COLOURS OF CABLE

- A** - Light blue
- B** - Withe
- C** - Orange
- G** - Yellow
- H** - Grey
- L** - Blue
- M** - Brown
- N** - Black
- P** - Beige
- R** - Red
- S** - Pink
- V** - Green
- Z** - Violet

Note: The not indicated section of the wires is 0,8 mm²

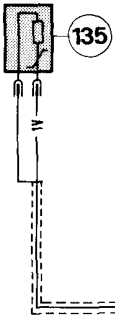


FIG. 12

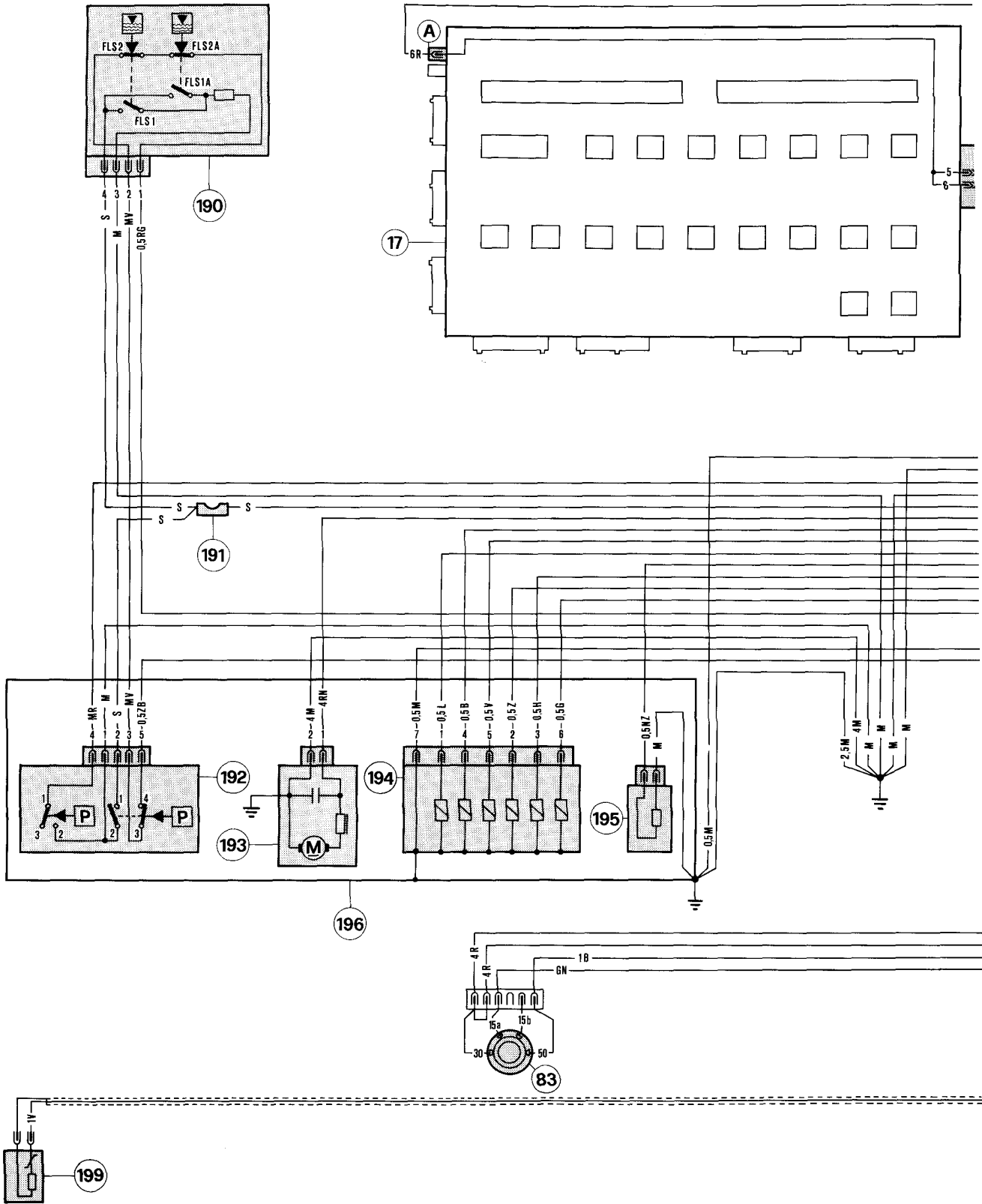


FIG. 12

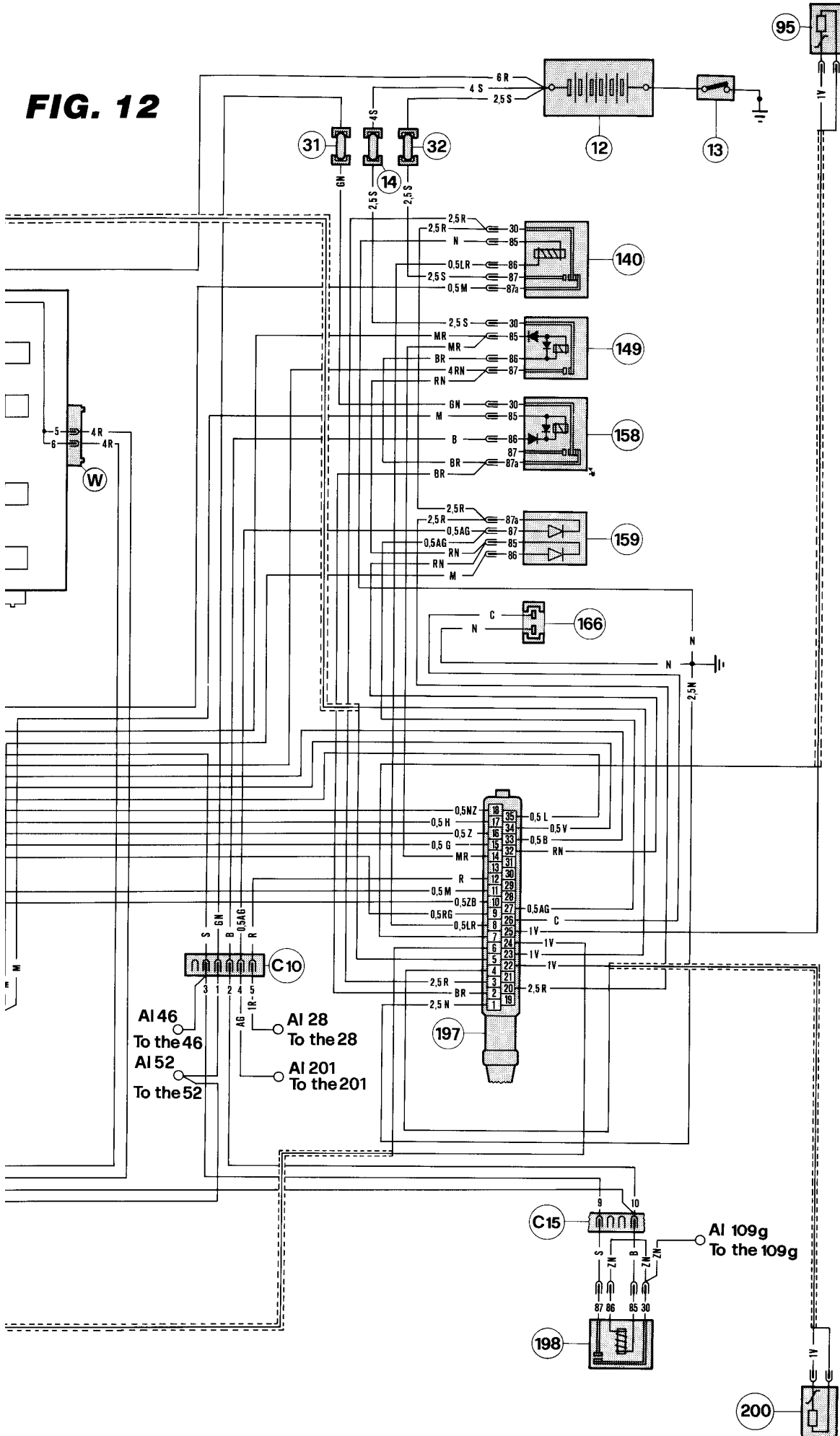


FIG. 13 — INTERNAL TEMPERATURE AND WATER RADIATOR BLOWERS

- 7** — Motor of A.C. condenser fan
- 8** — L.H. water radiator fan
- 9** — R.H. water radiator fan
- 10** — Thermoswitch on radiator for cooling motors 8-9

- 12** — Battery
- 13** — Battery switch
- 17** — Electric board
- 18** — Thermoswitch for blower motor 7
- 33** — Min. pressure switch for air conditioning
- 34** — Max. pressure switch for air conditioning
- 60** — Push button unit for A.C. system (12V - 1,2W)

- 61** — Air conditioning fan speed variator

- 62** — Fuse (all glass 1 A) protecting variator 61
- 63** — Electro-magnetic valve for water flow to the heating unit

- 64** — Air conditioning potentiometer for temperature selection

- 83** — Key operated antitheft and ignition switch

- 87** — Cigarette lighter with illumination (12V - 1,2W)
- 91** — Passenger's compartment temperature sensor
- 99** — Motor of suction fan for passenger's compartment temperature sensor
- 103** — Air conditioning evaporator with:
 - a** - Power transistor for blower motor
 - b** - Blower motor
 - c** - Blower motor relay
 - d** - Air temperature sensor at main outlet
 - e** - Evaporator temperature sensor
 - i** - Miscroswitch on defroster lid
 - l** - External air temperature sensor
 - m** - Relay for electromagnetic valve 63 (SIPEA 0440)

 - n** - Relay for A.C. compressor (SIPEA 0442)

- 108** — Lamp for illumination of controls on central consolle (12V - 5W)
- 109** — **h** - Electronic unit for internal temperature (underneath passenger's foot rest)

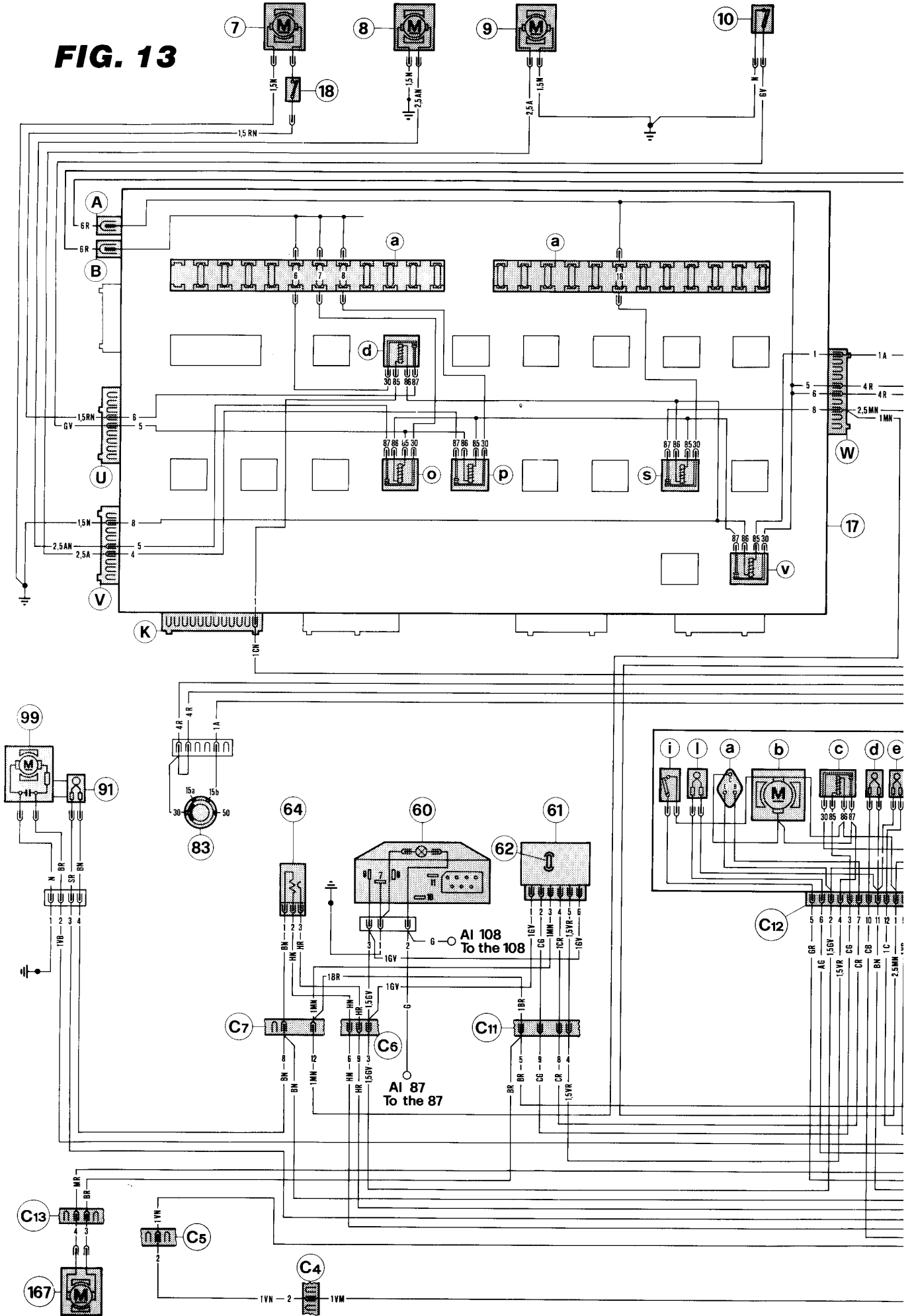
- 136** — Electro-magnetic clutch for A.C. compressor
- 167** — Heating system pump

COLOURS OF CABLE

A	- Light blue
B	- Withe
C	- Orange
G	- Yellow
H	- Grey
L	- Blue
M	- Brown
N	- Black
P	- Beige
R	- Red
S	- Pink
V	- Green
Z	- Violet

Note: The not indicated section of the wires is 0,8 mm²

FIG. 13



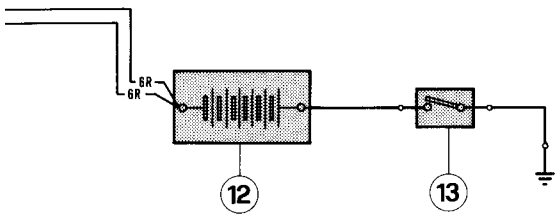


FIG. 13

