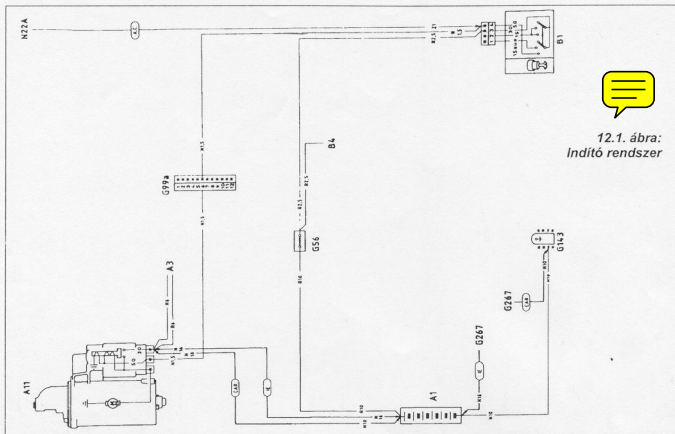
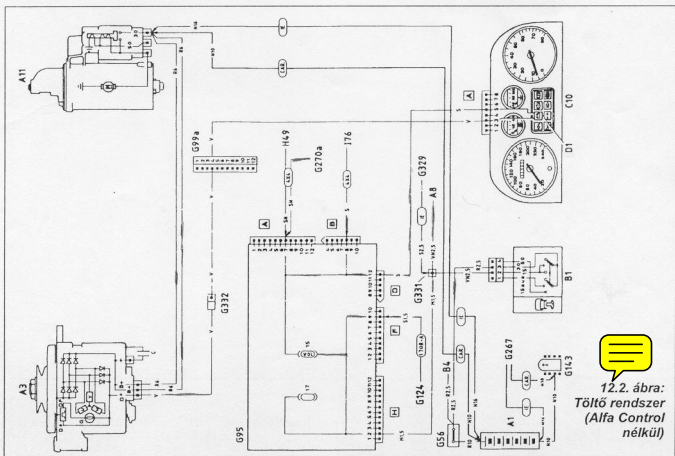
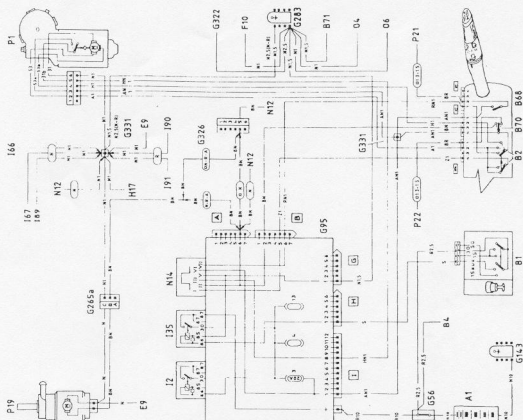


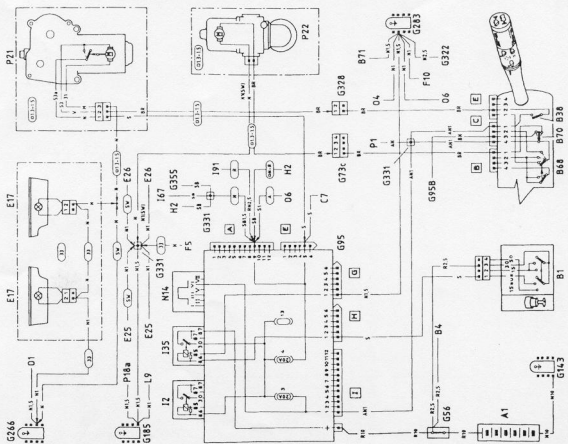
12.1.3. Az Alfa 33 elektromos kapcsolási rajzi

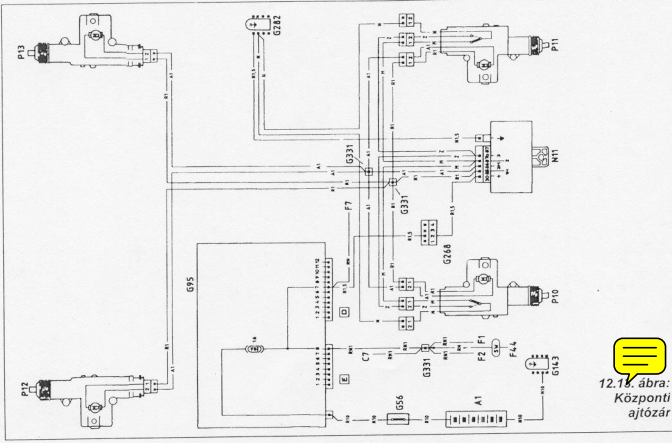
12.1. ábra:
Indító rendszer12.2. ábra:
Töltő rendszer
(Alfa Control
nélkül)

12.11. ábra:
Szelvédőtörő és -
mosó motor

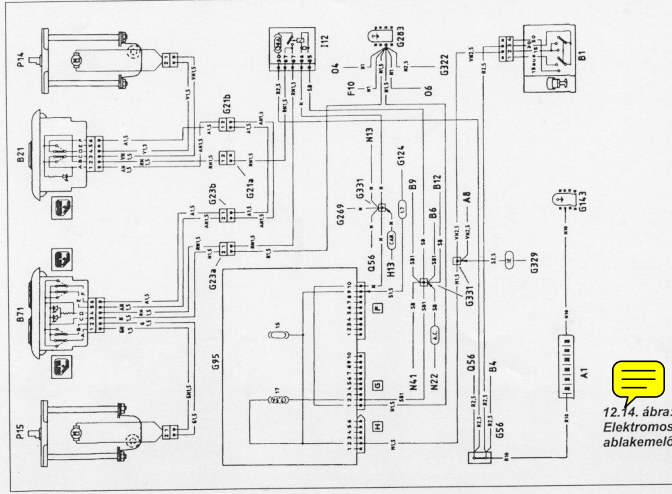


12.12. ábra:
Hátsó
ablaktörő és
mosó motor

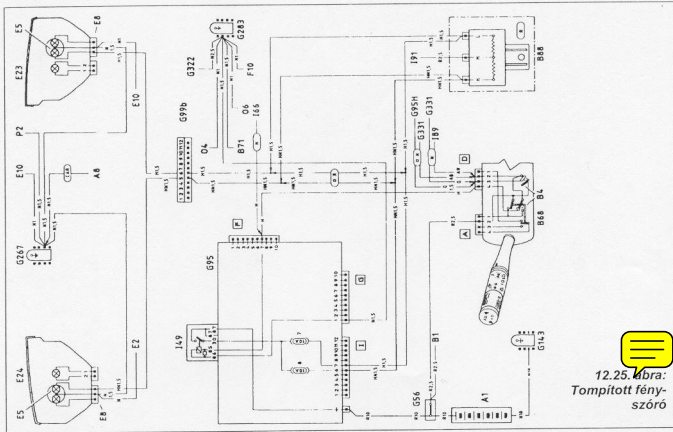




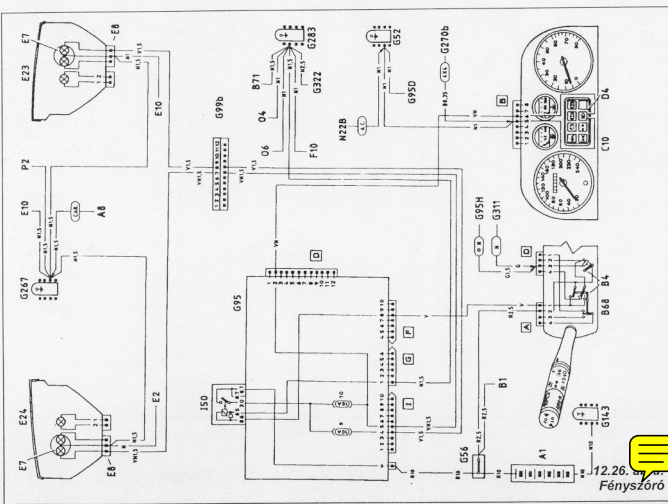
12.13. ábra: Központi ajtózáros



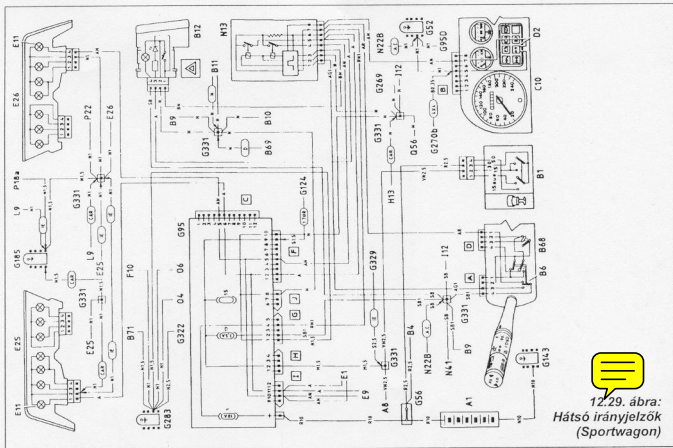
12.14. ábra: Elektromos ablakemelő



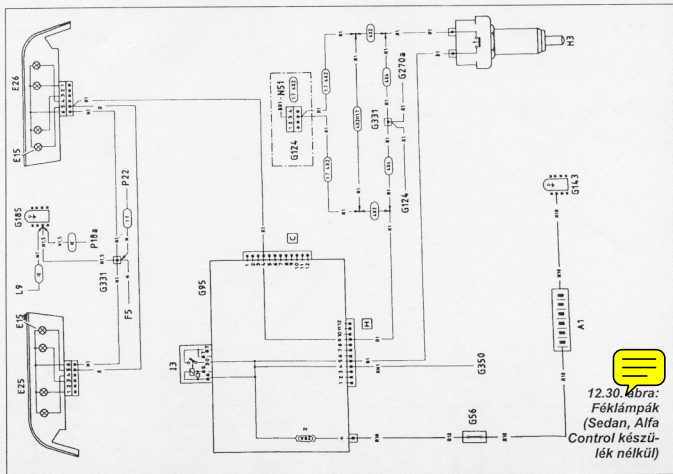
12.25. ábra:
Tompított fényezés



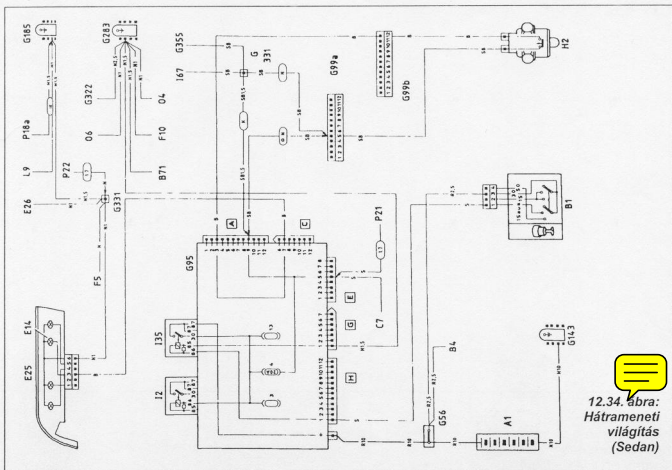
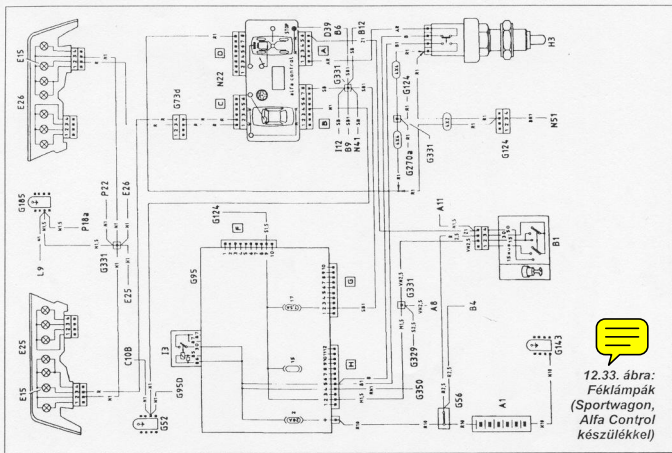
12.26. ábra:
Fényszóró



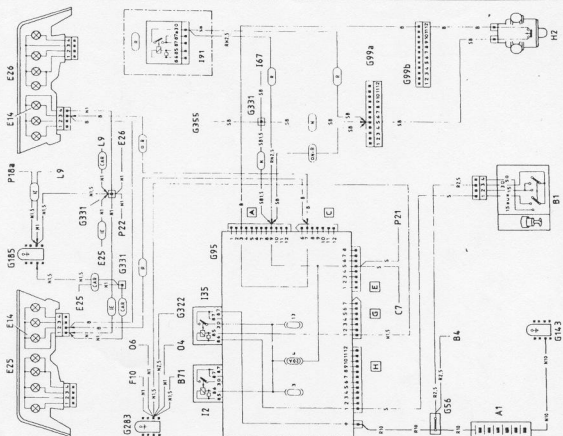
12.29. ábra:
Hátso irányjelzők
(Sportwagon)



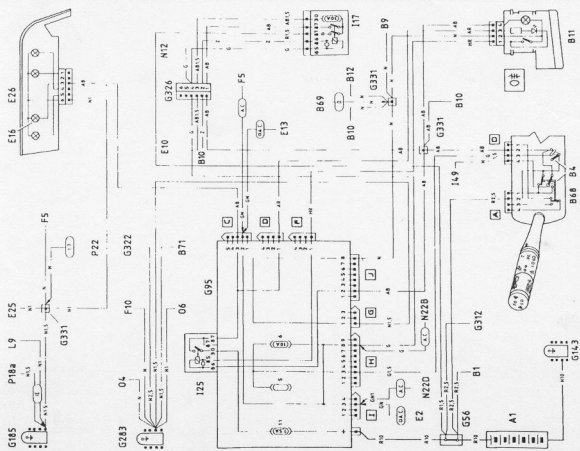
12.30. ábra:
Féklámpák
(Sedan, Alfa
Control készü-
lék nélkül)



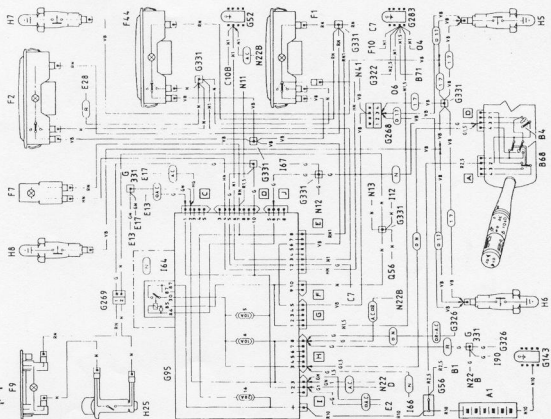
12.31. ábra:
Hátrameneti
világítás
(Sport Wagon)



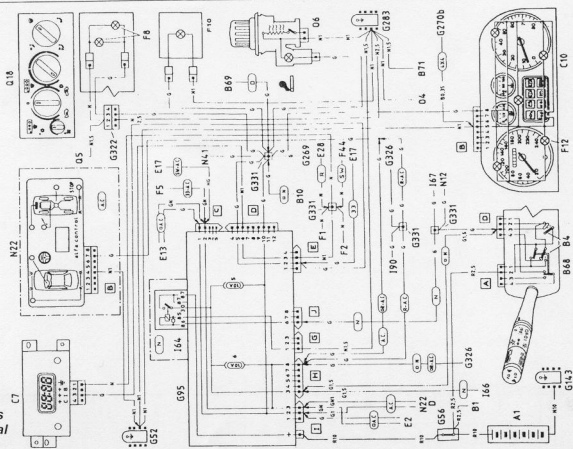
12.36. ábra:
Hátsó köd-
lámpa
(Sedan)

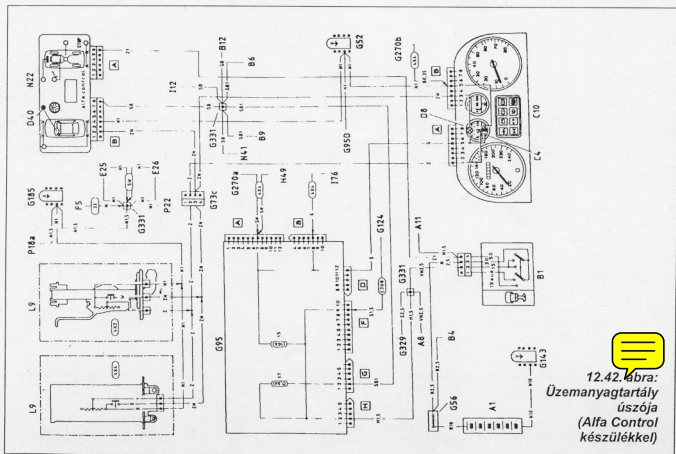
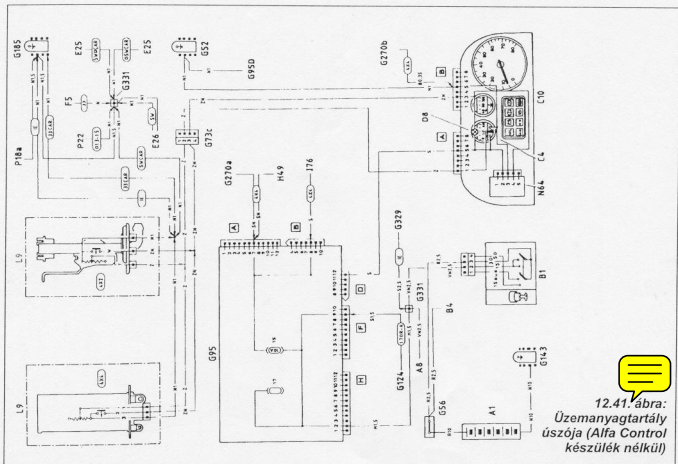


12.13. ábra:
Utastér, csomag-
tér és kesztyűtar-
tó világítása
(Sport Wagon)

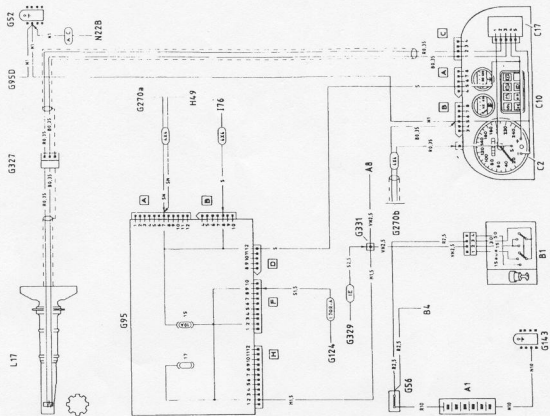


12.14. ábra:
Műszerfal és
szerelvényfal
világítása

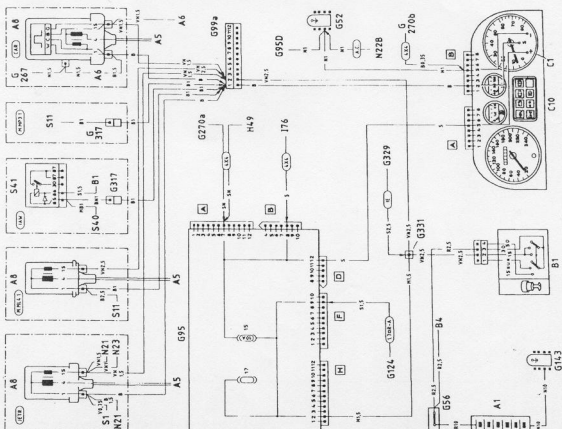


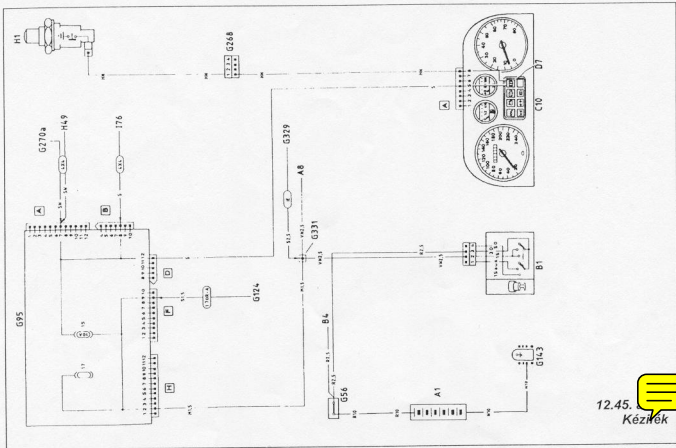


12.4. ábra:
Sebességmérő
érzékelője

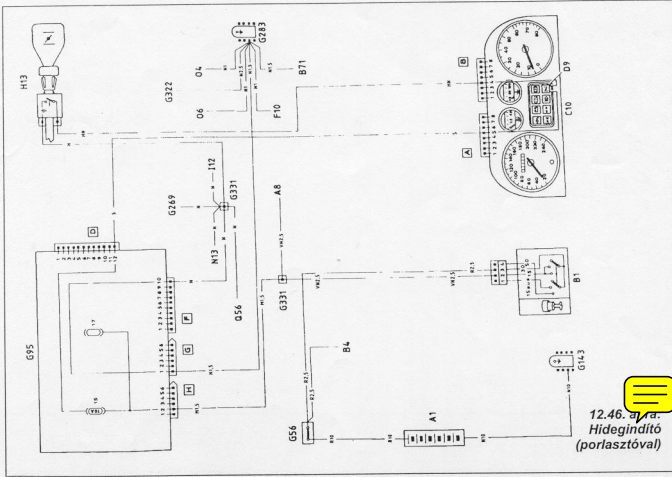


12.4. ábra:
Fordulat-
számmérő

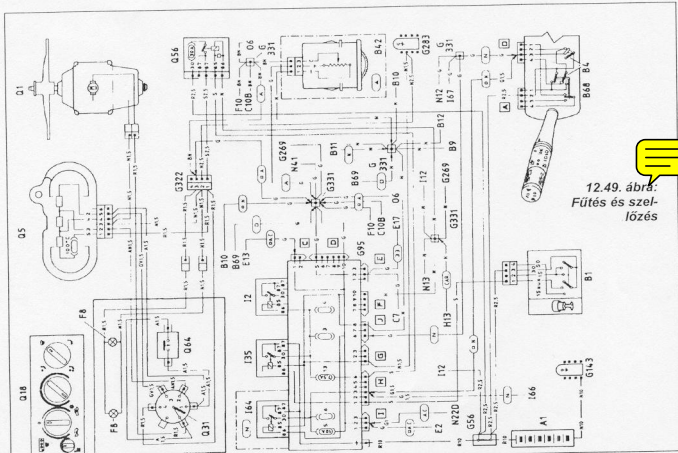




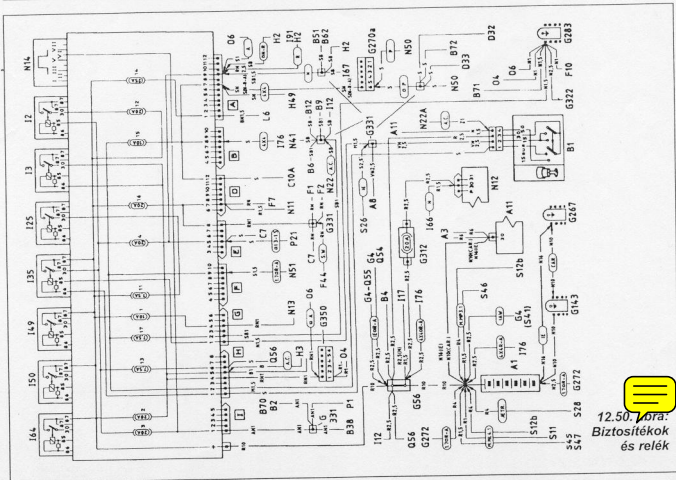
12.45. Kézifék



12.46. a) a. Hidegindító (porlasztóval)



12.49. ábra:
Fűtés és szellőzés



12.50. ábra:
Biztosítékok
és relék